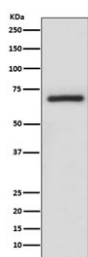


## A-Raf Antibody / ARAF [clone IBA-1] (RQ5320)

Catalog No.	Formulation	Size
RQ5320	Antibody in PBS with 0.02% sodium azide, 50% glycerol and 0.4-0.5mg/ml BSA	100 ul

[Bulk quote request](#)

Availability	1-2 weeks
Species Reactivity	Human
Format	Purified
Clonality	Rabbit Monoclonal
Isotype	Rabbit IgG
Clone Name	IBA-1
Purity	Affinity purified
UniProt	P10398
Applications	Western Blot : 1:500-1:2000
Limitations	This A-Raf antibody is available for research use only.



Western blot testing of human A375 cell lysate with A-Raf antibody. Predicted molecular weight ~67 kDa.

### Description

The ARAF proto-oncogene belongs to the RAF subfamily of the Ser/Thr protein kinase family, and maybe involved in cell growth and development. [RefSeq]

### Application Notes

Optimal dilution of the A-Raf antibody should be determined by the researcher.

### Immunogen

A synthetic peptide specific to human A-Raf was used as the immunogen for the A-Raf antibody.

## **Storage**

Store the A-Raf antibody at -20oC.