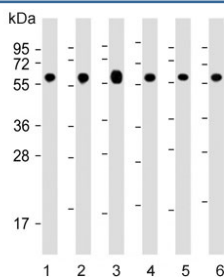


## 60 kDa Heat Shock Protein Antibody / Hsp60 (F54512)

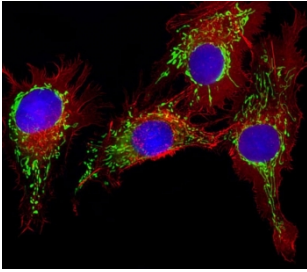
Catalog No.	Formulation	Size
F54512-0.2ML	In 1X PBS, pH 7.4, with 0.09% sodium azide	0.2 ml
F54512-0.05ML	In 1X PBS, pH 7.4, with 0.09% sodium azide	0.05 ml

[Bulk quote request](#)

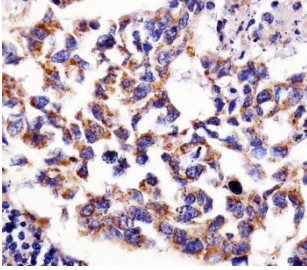
<b>Availability</b>	1-3 business days
<b>Species Reactivity</b>	Human, Mouse, Rat
<b>Format</b>	Purified
<b>Host</b>	Rabbit
<b>Clonality</b>	Polyclonal (rabbit origin)
<b>Isotype</b>	Rabbit Ig
<b>Purity</b>	Antigen affinity purified
<b>UniProt</b>	P10809
<b>Localization</b>	Cytoplasmic
<b>Applications</b>	Western Blot : 1:500-1:2000 Flow Cytometry : 1:25 (1x10e6 cells) Immunohistochemistry (FFPE) : 1:25 Immunofluorescence : 1:25
<b>Limitations</b>	This 60 kDa Heat Shock Protein antibody is available for research use only.



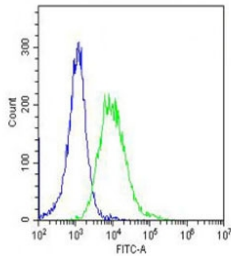
Western blot testing of human 1) Jurkat, 2) HeLa, 3) HepG2, 4) MCF7, 5) mouse NIH 3T3 and 6) rat PC-12 cell lysate with 60 kDa Heat Shock Protein antibody. Predicted molecular weight ~60 kDa.



Immunofluorescent staining of fixed and permeabilized human HepG2 cells with 60 kDa Heat Shock Protein antibody (green), DAPI nuclear stain (blue) and anti-Actin (red).



IHC testing of FFPE human lung adenocarcinoma tissue with 60 kDa Heat Shock Protein antibody. HIER: steam section in pH6 citrate buffer for 20 min and allow to cool prior to staining.



Flow cytometry testing of fixed and permeabilized human HeLa cells with 60 kDa Heat Shock Protein antibody; Blue=isotype control, Green= 60 kDa Heat Shock Protein antibody.

## Description

Implicated in mitochondrial protein import and macromolecular assembly. May facilitate the correct folding of imported proteins. May also prevent misfolding and promote the refolding and proper assembly of unfolded polypeptides generated under stress conditions in the mitochondrial matrix.

## Application Notes

The stated application concentrations are suggested starting points. Titration of the 60 kDa Heat Shock Protein antibody may be required due to differences in protocols and secondary/substrate sensitivity.

## Immunogen

Recombinant human protein was used as the immunogen for the 60 kDa Heat Shock Protein antibody.

## Storage

Aliquot the 60 kDa Heat Shock Protein antibody and store frozen at -20°C or colder. Avoid repeated freeze-thaw cycles.

