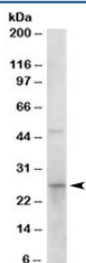


15-PGDH Antibody / HPGD (R33680)

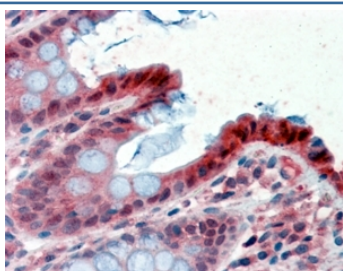
| Catalog No. | Formulation | Size |
|--------------|---|--------|
| R33680-100UG | 0.5 mg/ml in 1X TBS, pH7.3, with 0.5% BSA (US sourced) and 0.02% sodium azide | 100 ug |

[Bulk quote request](#)

| | |
|--------------------|---|
| Availability | 1-3 business days |
| Species Reactivity | Human |
| Format | Antigen affinity purified |
| Clonality | Polyclonal (goat origin) |
| Isotype | Goat Ig |
| Purity | Antigen affinity |
| Gene ID | 3248 |
| Localization | Cytoplasm, Nucleus |
| Applications | Western Blot : 0.1-0.5ug/ml Immunohistochemistry (FFPE) : 2-4ug/ml ELISA (peptide) LOD : 1:128000 |
| Limitations | This 15-PGDH antibody is available for research use only. |



Western blot testing of human duodenum lysate with 15-PGDH antibody at 0.1ug/ml. A band was detected at approximately 26 kDa, which is slightly lower than the predicted 29 kDa but consistent with the known migration behavior of HPGD reported in the literature.



IHC staining of FFPE human colon with 15-PGDH antibody at 2.5ug/ml. HIER: steamed with pH6 citrate buffer, AP-staining.

Description

Additional name(s) for this target protein: Hydroxyprostaglandin dehydrogenase 15; Prostaglandin dehydrogenase 1; HPGD

Application Notes

Optimal dilution of the 15-PGDH antibody should be determined by the researcher.

Immunogen

Amino acids DYDTTPFQAKTQ were used as the immunogen for this 15-PGDH antibody.

Storage

Aliquot and store the 15-PGDH antibody at -20°C.