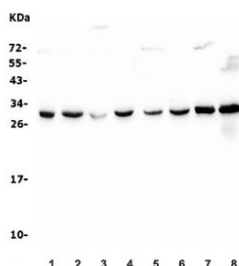


## 14-3-3 zeta/delta Antibody / YWHAZ [clone 6H7] (RQ5643)

Catalog No.	Formulation	Size
RQ5643	0.5mg/ml if reconstituted with 0.2ml sterile DI water	100 ug

**Bulk quote request**

<b>Availability</b>	1-3 business days
<b>Species Reactivity</b>	Human, Mouse, Rat, Monkey
<b>Format</b>	Antigen affinity purified
<b>Clonality</b>	Monoclonal
<b>Isotype</b>	Mouse IgG1
<b>Clone Name</b>	6H7
<b>Purity</b>	Affinity purified
<b>Buffer</b>	Lyophilized from 1X PBS with 2% Trehalose and 0.025% sodium azide
<b>UniProt</b>	P63104
<b>Applications</b>	Western Blot : 0.5-1ug/ml
<b>Limitations</b>	This 14-3-3 zeta/delta antibody is available for research use only.



Western blot testing of 1) human HeLa, 2) human A549, 3) monkey COS-7, 4) human Raji, 5) human Caco-2, 6) human Jurkat, 7) mouse brain and 8) rat brain lysate with 14-3-3 zeta/delta antibody. Predicted molecular weight ~28 kDa.

## Description

14-3-3 protein zeta/delta is a protein that in humans is encoded by the YWHAZ gene on chromosome 8. This gene product belongs to the 14-3-3 family of proteins which mediate signal transduction by binding to phosphoserine-containing proteins. This highly conserved protein family is found in both plants and mammals, and this protein is 99% identical to the mouse, rat and sheep orthologs. The encoded protein interacts with IRS1 protein, suggesting a role in regulating insulin sensitivity. Several transcript variants that differ in the 5' UTR but that encode the same protein have been identified for this gene.

## Application Notes

Optimal dilution of the 14-3-3 zeta/delta antibody should be determined by the researcher.

## Immunogen

Amino acids LLEKFLIPNASQAESKVFYLMKGDYYRYLAEVAAGDDKKGIVDQ from the human protein were used as the immunogen for the 14-3-3 zeta/delta antibody.

## Storage

After reconstitution, the 14-3-3 zeta/delta antibody can be stored for up to one month at 4oC. For long-term, aliquot and store at -20oC. Avoid repeated freezing and thawing.