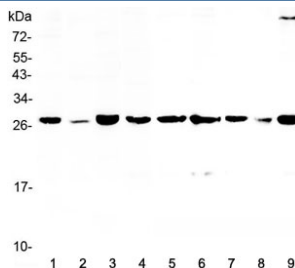


14-3-3 sigma Antibody (RQ4072)

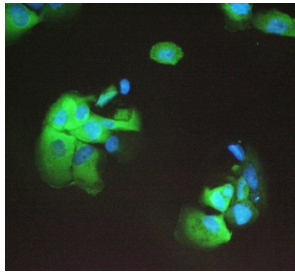
Catalog No.	Formulation	Size
RQ4072	0.5mg/ml if reconstituted with 0.2ml sterile DI water	100 ug

Bulk quote request

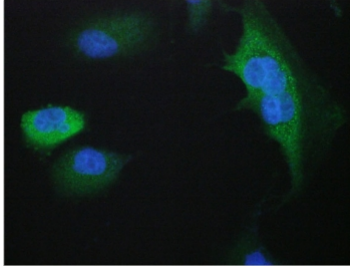
Availability	1-3 business days
Species Reactivity	Human, Mouse, Rat
Format	Antigen affinity purified
Host	Rabbit
Clonality	Polyclonal (rabbit origin)
Isotype	Rabbit IgG
Purity	Antigen affinity purified
Buffer	Lyophilized from 1X PBS with 2% Trehalose and 0.025% sodium azide
UniProt	P31947
Localization	Cytoplasmic, nuclear
Applications	Western Blot : 0.5-1ug/ml IF/ICC : 2-4ug/ml Flow Cytometry : 1-3ug/10 ⁶ cells IHC (FFPE) : 1-2ug/ml Direct ELISA : 0.1-0.5ug/ml
Limitations	This 14-3-3 sigma antibody is available for research use only.



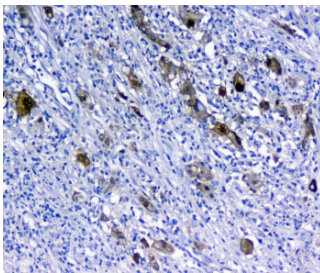
Western blot testing of human 1) HeLa, 2) placenta, 3) MCF7, 4) 22RV1, 5) rat lung, 6) rat PC-12, 7) mouse lung, 8) mouse HEPA1-6 and 9) mouse NIH3T3 lysate with 14-3-3 sigma antibody at 0.5ug/ml.



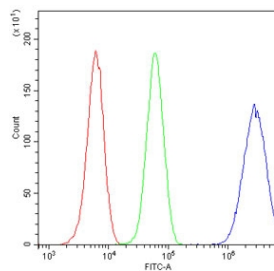
IF/ICC staining of FFPE human A431 cells with 14-3-3 sigma antibody (green) at 2ug/ml and DAPI nuclear stain (blue). HIER: boil tissue sections in pH6, 10mM citrate buffer, for 10-20 min and allow to cool before testing.



IF/ICC staining of FFPE human A549 cells with 14-3-3 sigma antibody (green) at 2ug/ml and DAPI nuclear stain (blue). HIER: boil tissue sections in pH6, 10mM citrate buffer, for 10-20 min and allow to cool before testing.



IHC staining of FFPE human rectal cancer with 14-3-3 sigma antibody at 1ug/ml. HIER: boil tissue sections in pH6, 10mM citrate buffer, for 10-20 min and allow to cool before testing.



Flow cytometry testing of human U-2 OS cells with 14-3-3 sigma antibody at 1ug/10⁶ cells (blocked with goat sera); Red=cells alone, Green=isotype control, Blue= 14-3-3 sigma antibody.

Description

Stratifin (SFN), also known as 14-3-3 protein sigma, is strongly induced by gamma irradiation and other DNA-damaging agents. The induction of 14-3-3-sigma is mediated by a p53 -responsive element located 1.8 kb upstream of its transcription start site. The protein, called stratifin, was shown to be diffusely distributed in the cytoplasm and was present in cultured epithelial cells. It was most abundant in tissues enriched in stratified keratinizing epithelium.

Application Notes

Optimal dilution of the 14-3-3 sigma antibody should be determined by the researcher.

Immunogen

A recombinant human partial protein corresponding to amino acids M1-S248 was used as the immunogen for the 14-3-3 sigma antibody.

Storage

After reconstitution, the 14-3-3 sigma antibody can be stored for up to one month at 4oC. For long-term, aliquot and store at -20oC. Avoid repeated freezing and thawing.

