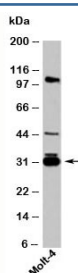


14-3-3 sigma Antibody (N1084)

Catalog No.	Formulation	Size
N1084-100UG	0.5 mg/ml in 1X PBS with 0.1 mg/ml BSA (US sourced), 0.05% sodium azide	100 ug
N1084-25UG	0.5 mg/ml in 1X PBS with 0.1 mg/ml BSA (US sourced), 0.05% sodium azide	25 ug

[Bulk quote request](#)

Species Reactivity	Human, Mouse, Rat
Format	Purified
Host	Rabbit
Clonality	Polyclonal (rabbit origin)
Isotype	Rabbit IgG
Purity	Protein A affinity chromatography
Buffer	1X PBS, pH 7.4
Gene ID	2810
Applications	Western Blot : 1-3ug/ml
Limitations	This 14-3-3 sigma antibody is available for research use only.



Western blot testing of human samples with 14-3-3 sigma antibody at 1ug/ml. Predicted molecular weight: ~28kDa.

Description

14-3-3 proteins are regulators of a diverse group of signaling proteins, including kinases, phosphatases, and transmembrane receptors, and have roles in a wide range of physiological processes including transcription, intracellular signaling, cell cycle control and apoptosis. There are seven 14-3-3 proteins in most mammals: beta, gamma epsilon, zeta, eta, sigma and tau. 14-3-3 sigma, also called Stratifin, is a product of the SFN gene. It is a tumor suppressor gene inactivated via DNA methylation. Reduced or no expression of 14-3-3 sigma is seen in various carcinoma including skin, breast and prostate, suggesting that 14-3-3 gene silencing may be involved in tumor progression.

Application Notes

Provided assay concentrations are suggestions only, 14-3-3 sigma antibody titration may be required for optimal results.

Immunogen

A recombinant protein fragment from the internal region of 14-3-3 sigma was used as the immunogen for this antibody. The amino acid sequence is common to the ~30kDa and ~20kDa isoforms.

Storage

Aliquot the 14-3-3 sigma antibody and store frozen at -20oC or colder. Avoid repeated freeze-thaw cycles.

Alternate Names

SFN, YWHAS, Stratifin antibody