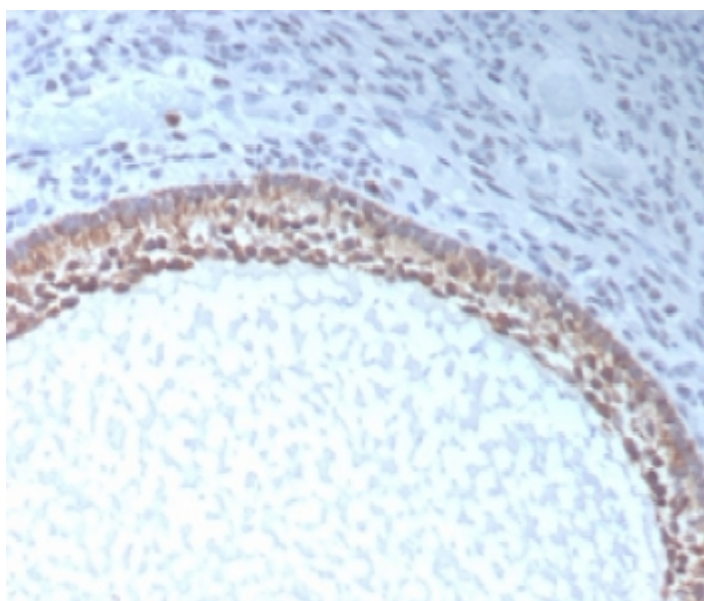


Anti-Muellerian Hormone Antibody / AMH / MIF [clone AMH/300] (V9340)

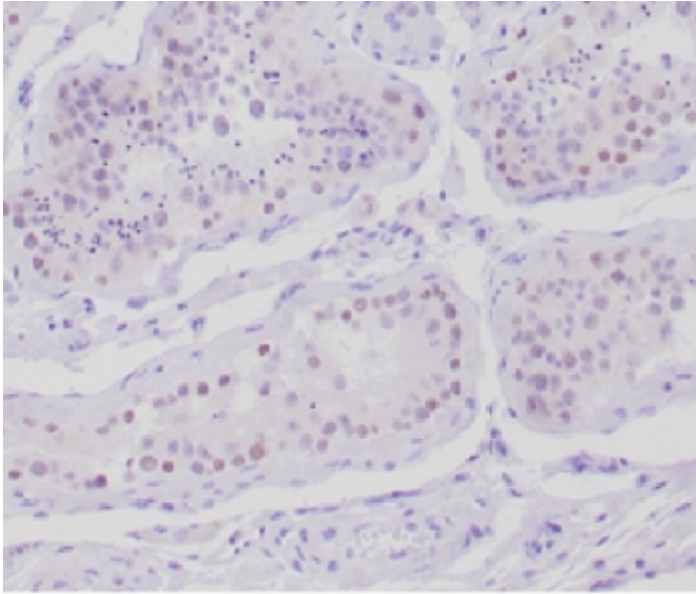
Catalog No.	Formulation	Size
V9340-100UG	0.2 mg/ml in 1X PBS with 0.1 mg/ml BSA (US sourced), 0.05% sodium azide	100 ug
V9340-20UG	0.2 mg/ml in 1X PBS with 0.1 mg/ml BSA (US sourced), 0.05% sodium azide	20 ug
V9340SAF-100UG	1 mg/ml in 1X PBS; BSA free, sodium azide free	100 ug

Bulk quote request

Availability	1-3 business days
Species Reactivity	Human
Format	Purified
Clonality	Monoclonal (mouse origin)
Isotype	Mouse IgG1, kappa
Clone Name	AMH/300
Purity	Protein A/G affinity
UniProt	IDP03971
Localization	Secreted
Applications	Western blot : 1-2ug/ml Immunohistochemistry (FFPE) : 1-2ug/ml
Limitations	This Anti-Muellerian Hormone antibody is available for research use only.



IHC staining of FFPE human ovarian tissue with Anti-Muellerian Hormone antibody (clone AMH/300).
HIER: boil tissue sections in pH 9 10mM Tris with 1mM EDTA for 20 min and allow to cool before testing.



IHC staining of FFPE human testis tissue with Anti-Mullerian Hormone antibody (clone AMH/300).
HIER: boil tissue sections in pH 9 10mM Tris with 1mM EDTA for 20 min and allow to cool before testing.

Description

This glycoprotein, produced by the Sertoli cells of the testis, causes regression of the Muellerian duct. It is also able to inhibit the growth of tumors derived from tissues of Muellerian duct origin. [UniProt]

Application Notes

Optimal dilution of the Anti-Muellerian Hormone antibody should be determined by the researcher.

Immunogen

A portion of amino acids 460-560 was used as the immunogen for the Anti-Muellerian Hormone antibody.

Storage

Aliquot the Anti-Muellerian Hormone antibody and store frozen at -20oC or colder. Avoid repeated freeze-thaw cycles.