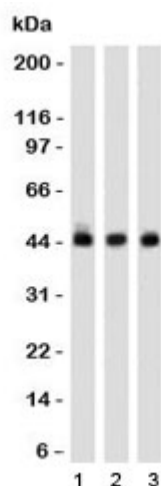


Napsin A Antibody [clone NPSNA-1] (V7177)

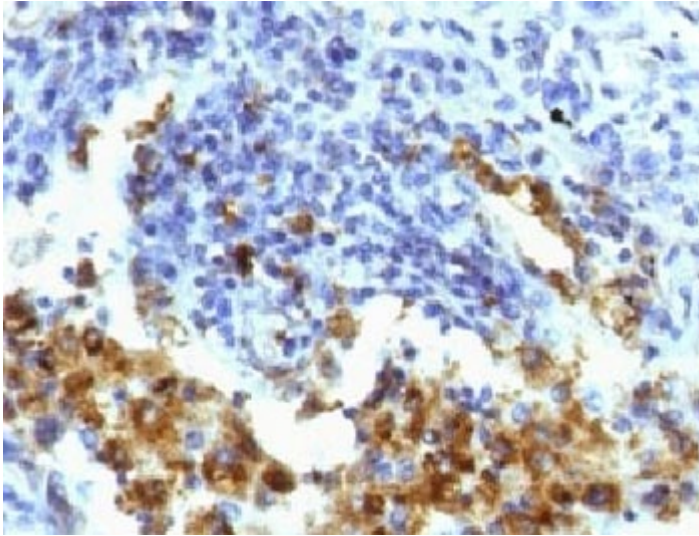
Catalog No.	Formulation	Size
V7177-100UG	0.2 mg/ml in 1X PBS with 0.1 mg/ml BSA (US sourced) and 0.05% sodium azide	100 ug
V7177-20UG	0.2 mg/ml in 1X PBS with 0.1 mg/ml BSA (US sourced) and 0.05% sodium azide	20 ug
V7177SAF-100UG	1 mg/ml in 1X PBS; BSA free, sodium azide free	100 ug
V7177IHC-7ML	Prediluted in 1X PBS with 0.1 mg/ml BSA (US sourced) and 0.05% sodium azide; *For IHC use only*	7 ml

[Bulk quote request](#)

Availability	1-3 business days
Species Reactivity	Human
Format	Purified
Clonality	Monoclonal (mouse origin)
Isotype	Mouse IgG1, kappa
Clone Name	NPSNA-1
Purity	Protein G affinity chromatography
UniProt	O96009
Localization	Cytoplasmic
Applications	Western blot : 1-2ug/ml Immunohistochemistry (FFPE) : 1-2ug/ml for 30 min at RT Prediluted IHC only format : incubate for 30 min at RT (1)
Limitations	This Napsin A antibody is available for research use only.



Western blot of 1) K562, 2) 293 and 3) A549 cell lysates using Napsin A antibody (clone NPSNA-1). Predicted molecular weight ~45 kDa.



IHC testing of FFPE human lung adenocarcinoma with Napsin A antibody (clone NPSNA-1). FFPE testing requires sections to be boiled in pH 9 10mM Tris with 1mM EDTA for 10-20 minutes, followed by cooling at RT for 20 minutes, prior to staining.

Description

Napsin-A is a protein that in humans is encoded by the NAPSA gene. The activation peptides of aspartic proteinases plays role as inhibitors of the active site. These peptide segments, or pro-parts, are deemed important for correct folding, targeting, and control of the activation of aspartic proteinase zymogens. The pro-Napsin A gene is expressed predominantly in lung and kidney. Its translation product is predicted to be a fully functional, glycosylated aspartic proteinase precursor containing an RGD motif and an additional 18 residues at its C-terminus. [Wiki]

Application Notes

Titering of the Napsin A antibody may be required for optimal performance.

1. The prediluted format is supplied in a dropper bottle and is optimized for use in IHC. After epitope retrieval step (if required), drip mAb solution onto the tissue section and incubate at RT for 30 min.

Immunogen

Amino acids 189-299 from the human protein were used as the immunogen for the Napsin A antibody.

Storage

Store the Napsin A antibody at 2-8oC (with azide) or aliquot and store at -20oC or colder (without azide).