

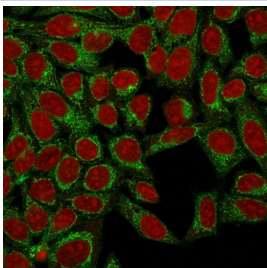
Podocalyxin Antibody [clone 3D3] (V2227)

Catalog No.	Formulation	Size
V2227-100UG	0.2 mg/ml in 1X PBS with 0.1 mg/ml BSA (US sourced) and 0.05% sodium azide	100 ug
V2227-20UG	0.2 mg/ml in 1X PBS with 0.1 mg/ml BSA (US sourced) and 0.05% sodium azide	20 ug
V2227SAF-100UG	1 mg/ml in 1X PBS; BSA free, sodium azide free	100 ug
V2227IHC-7ML	Prediluted in 1X PBS with 0.1 mg/ml BSA (US sourced) and 0.05% sodium azide; *For IHC use only*	7 ml

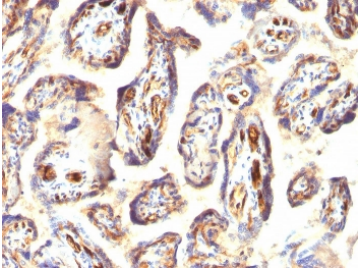
 Citations (9)

[Bulk quote request](#)

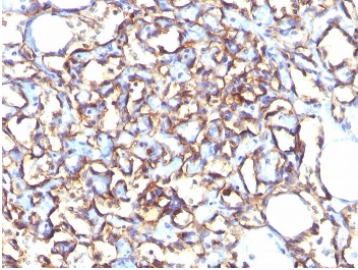
Species Reactivity	Human, Rat
Format	Purified
Host	Mouse
Clonality	Monoclonal (mouse origin)
Isotype	Mouse IgG1, kappa
Clone Name	3D3
Purity	Protein G affinity chromatography
Gene ID	5420
Localization	Cell surface and cytoplasmic
Applications	Flow Cytometry : 0.5-1ug/10 ⁶ cells Immunofluorescence : 1-2ug/ml Western Blot : 0.5-1ug/ml Immunohistochemistry (FFPE) : 0.5-1ug/ml for 30 min at RT
Limitations	This Podocalyxin antibody is available for research use only.



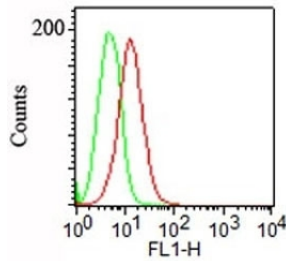
Immunofluorescent staining of human HeLa cells with Podocalyxin antibody (clone 3D3, green) and Reddot nuclear stain (red).



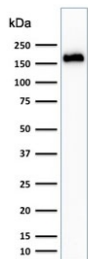
IHC staining of FFPE human placenta with Podocalyxin antibody (clone 3D3). HIER: boil tissue sections in pH6, 10mM citrate buffer, for 10-20 min and allow to cool before testing.



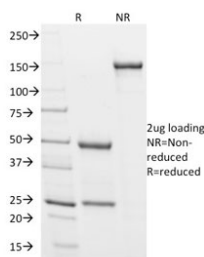
IHC staining of FFPE human angiosarcoma with Podocalyxin antibody (clone 3D3). HIER: boil tissue sections in pH6, 10mM citrate buffer, for 10-20 min and allow to cool before testing.



FACS staining of human NCCIT cells with Podocalyxin antibody (clone 3D3, red) and an isotype control antibody (green).



Western blot testing of human HeLa cell lysate with Podocalyxin antibody (clone 3D3). Expected molecular weight: 55-165 kDa depending on level of glycosylation.



SDS-PAGE analysis of purified, BSA-free Podocalyxin antibody (clone 3D3) as confirmation of integrity and purity.

Description

Podocalyxin is a member of the CD34 transmembrane sialomucin family. It is over-expressed on the podocyte foot projections and plays essential roles in kidney development and homeostasis, blood filtration and urine formation. It is also expressed on vascular endothelia, hematopoietic progenitors and a subset of neurons. Overexpression may be linked to more aggressive tumor behavior. Podocalyxin antibody can identify podocytes in the urine (podocyturia) that may indicate glomerular disease, pre-eclampsia, and other kidney pathology.

Application Notes

The concentration stated for each application is a general starting point. Variations in protocols, secondaries and substrates may require the Podocalyxin antibody to be titered up or down for optimal performance.

Immunogen

A human recombinant protein fragment containing the intracellular, transmembrane, and part of the extracellular domain was used as the immunogen for the Podocalyxin antibody.

Storage

Store the Podocalyxin antibody at 2-8oC (with azide) or aliquot and store at -20oC or colder (without azide).

Alternate Names

PODXL, PDXL, GCTM-2; Gp200; PCLP1; Pcx

References (3)