

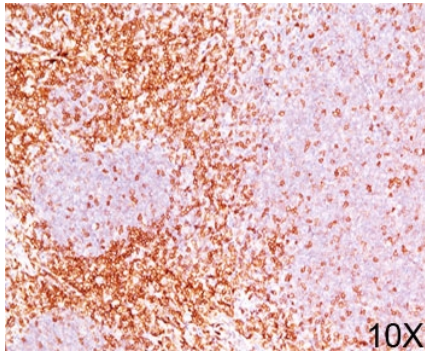
CD6 Antibody [clone 3F7B5] (V2039)

Catalog No.	Formulation	Size
V2039-100UG	0.2 mg/ml in 1X PBS with 0.1 mg/ml BSA (US sourced) and 0.05% sodium azide	100 ug
V2039-20UG	0.2 mg/ml in 1X PBS with 0.1 mg/ml BSA (US sourced) and 0.05% sodium azide	20 ug
V2039SAF-100UG	1 mg/ml in 1X PBS; BSA free, sodium azide free	100 ug
V2039IHC-7ML	Prediluted in 1X PBS with 0.1 mg/ml BSA (US sourced) and 0.05% sodium azide; *For IHC use only*	7 ml

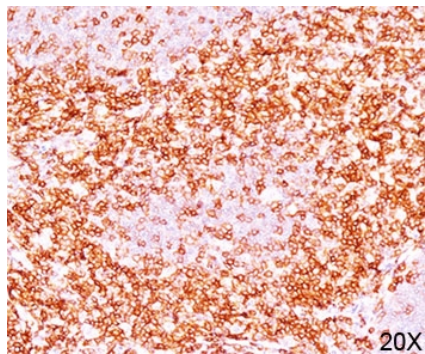
 [Citations \(2\)](#)

[Bulk quote request](#)

Species Reactivity	Human
Format	Purified
Clonality	Monoclonal (mouse origin)
Isotype	Mouse IgG1, kappa
Clone Name	3F7B5
Purity	Protein G affinity chromatography
Buffer	1X PBS, pH 7.4
Gene ID	923
Localization	Cell surface and cytoplasmic
Applications	Flow cytometry : 1-2ug/10 ⁶ cells Immunofluorescence : 1-2ug/ml Immunohistochemistry (FFPE) : 0.5-1ug/ml for 30 min at RT
Limitations	This CD6 antibody is available for research use only.



IHC testing of human tonsil stained with CD6 antibody (3F7B5).



Formalin/paraffin human tonsil stained with CD6 antibody (3F7B5).

Description

CD6 is a type I transmembrane glycoprotein that contains a 24-amino acid signal sequence, three extracellular “scavenger receptor cysteine-rich” (SRCR) domains, a membrane-spanning domain and a 44-amino acid cytoplasmic domain. The glycoprotein is tyrosine phosphorylated during TCR-mediated T cell activation. It shows significant homology to CD5. CD6 is present on mature thymocytes, peripheral T cells and a subset of B cells. CD6 antibody can be used to deplete T cells from bone marrow transplants to prevent graft versus host disease.

Immunogen

The human rheumatoid synovial T cell line ST-1 was used as the immunogen for this CD6 antibody.

Storage

Store the CD6 antibody at 2-8oC (with azide) or aliquot and store at -20oC or colder (without azide).

References (1)