

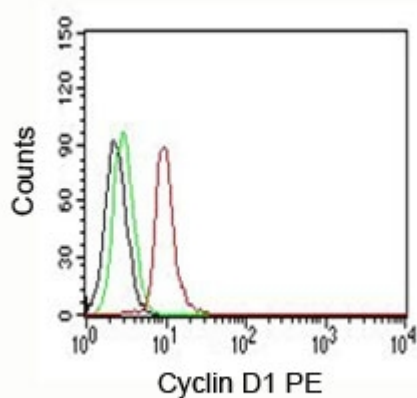
Cyclin D1 Antibody PE Conjugate [clone DCS-6] (V2006PE)

Catalog No.	Formulation	Size
V2006PE-100T	500 ul at 0.1 mg/ml with 0.1 mg/ml BSA (US sourced), 0.05% sodium azide	100 Tests

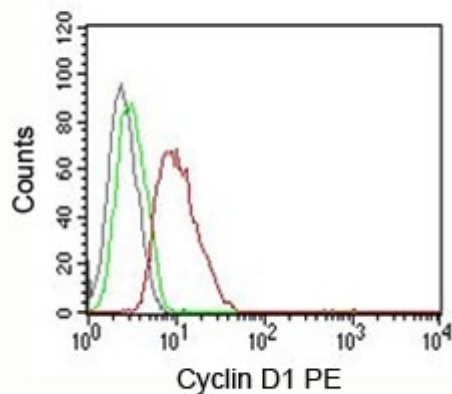
 [Citations \(22\)](#)

[Bulk quote request](#)

Availability	1-3 business days
Species Reactivity	Human, Monkey, Mouse and Rat. Other species not known.
Format	PE Conjugate
Clonality	Monoclonal (mouse origin)
Isotype	Mouse IgG2a, kappa
Clone Name	DCS-6
Purity	Protein G affinity chromatography
Buffer	1X PBS, pH 7.4
Gene ID	595
Localization	Nuclear
Applications	Flow Cytometry : 5ul/test/million cells or 5ul/test/100ul of whole blood Immunofluorescence : 1:50-1:100 for 30 minutes at RT
Limitations	This Cyclin D1 antibody is available for research use only.



FACS testing of Jurkat cells: Black=cells alone; Green=isotype control; Red=Cyclin D1 antibody



FACS testing of MCF-7 cells: Black=cells alone;
Green=isotype control; Red=Cyclin D1 antibody

Description

This antibody recognizes a protein of 36kDa, identified as Cyclin D1. Cyclin D1, one of the key cell cycle regulators, is a putative proto-oncogene overexpressed in a wide variety of human neoplasms. This antibody neutralizes the activity of cyclin D1 in vivo. About 60% of mantle cell lymphomas (MCL) contain a t(11; 14)(q13; q32) translocation resulting in over-expression. The antibody is useful in identifying mantle cell lymphomas (Cyclin D1 positive) from CLL/SLL and follicular lymphomas (Cyclin D1 negative). Occasionally, hairy cell leukemia and plasma cell myeloma weakly express Cyclin D1.

Application Notes

The dilution stated for each application is a general starting point. Variations in protocols, secondaries and substrates may require the DCS-6 mAb to be titered up or down for optimal performance.

Immunogen

Human recombinant full length Cyclin D1 protein was used as the immunogen.

Storage

Store the Cyclin D1 antibody at 2-8°C. Conjugate is light sensitive, store in the dark.

Alternate Names

Bcl-1, Bcl1

References (3)