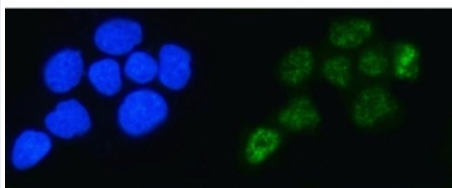


## ALYREF Antibody / Tho Complex 4 / THOC4 (RQ7142)

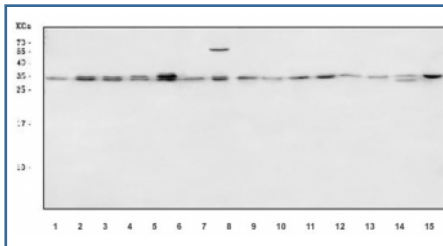
Catalog No.	Formulation	Size
RQ7142	0.5mg/ml if reconstituted with 0.2ml sterile DI water	100 ug

### Bulk quote request

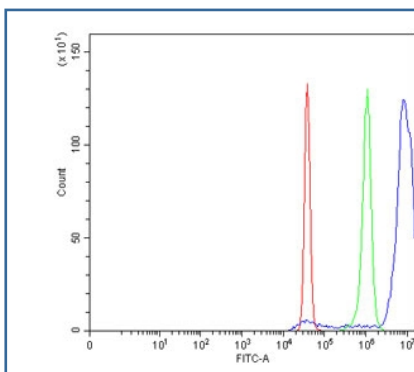
<b>Availability</b>	1-3 business days
<b>Species Reactivity</b>	Human, Mouse, Rat
<b>Format</b>	Antigen affinity purified
<b>Clonality</b>	Polyclonal (rabbit origin)
<b>Isotype</b>	Rabbit IgG
<b>Purity</b>	Antigen affinity purified
<b>Buffer</b>	Lyophilized from 1X PBS with 2% Trehalose
<b>UniProt</b>	Q86V81
<b>Localization</b>	Nuclear, cytoplasmic
<b>Applications</b>	Western blot : 0.5-1ug/ml Immunofluorescence : 5ug/ml Flow cytometry : 1-3ug/million cells Direct ELISA : 0.1-0.5ug/ml
<b>Limitations</b>	This ALYREF antibody is available for research use only.



Immunofluorescent staining of FFPE human A431 cells with ALYREF antibody (green) and DAPI nuclear stain (blue). HIER: steam section in pH6 citrate buffer for 20 min.



Western blot testing of 1) human placenta, 2) human PC-3, 3) human HeLa, 4) human HepG2, 5) human 293T, 6) human A431, 7) human A549, 8) rat brain, 9) rat liver, 10) rat PC-12, 11) rat NRK, 12) mouse brain, 13) mouse liver, 14) mouse Neuro-2a and 15) mouse RAW264.7 cell lysate with ALYREF antibody. Predicted molecular weight ~27 kDa.



Flow cytometry testing of human SiHa cells with ALYREF antibody at 1ug/million cells (blocked with goat sera); Red=cells alone, Green=isotype control, Blue= ALYREF antibody.

## Description

Aly/REF export factor, also known as THO complex subunit 4, THOC4 and Tho4, is a protein that in humans is encoded by the ALYREF gene. The protein encoded by this gene is a heat stable, nuclear protein and functions as a molecular chaperone. It is thought to regulate dimerization, DNA binding, and transcriptional activity of basic region-leucine zipper (bZIP) proteins.

## Application Notes

Optimal dilution of the ALYREF antibody should be determined by the researcher.

## Immunogen

Recombinant human protein (amino acids M1-S257) was used as the immunogen for the ALYREF antibody.

## Storage

After reconstitution, the ALYREF antibody can be stored for up to one month at 4oC. For long-term, aliquot and store at -20oC. Avoid repeated freezing and thawing.