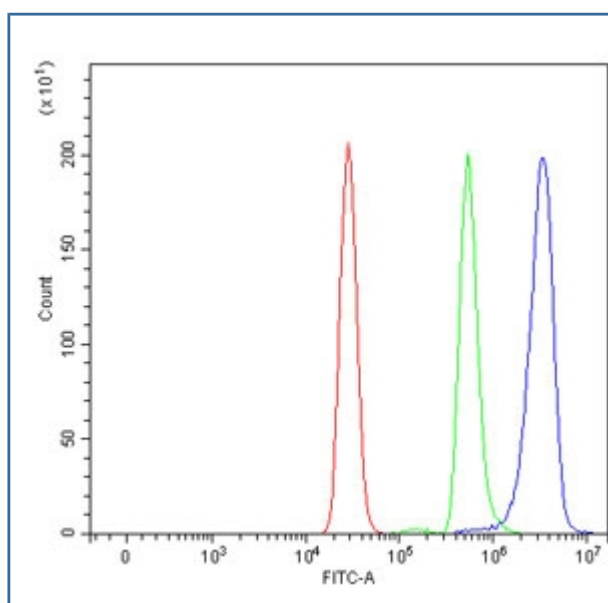


Apoptotic protease-activating factor 1 Antibody / APAF1 (RQ6937)

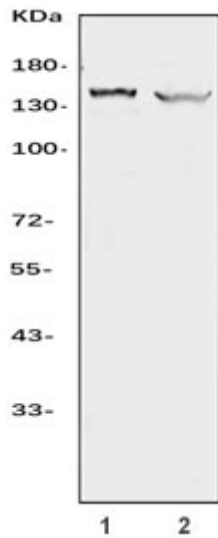
Catalog No.	Formulation	Size
RQ6937	0.5mg/ml if reconstituted with 0.2ml sterile DI water	100 ug

Bulk quote request

Availability	1-3 business days
Species Reactivity	Human
Format	Antigen affinity purified
Clonality	Polyclonal (rabbit origin)
Isotype	Rabbit IgG
Purity	Antigen affinity purified
Buffer	Lyophilized from 1X PBS with 2% Trehalose
UniProt	O14727
Applications	Western blot : 0.5-1 ug/ml Flow cytometry : 1-3ug/million cells Direct ELISA : 0.1-0.5ug/ml
Limitations	This Apoptotic protease-activating factor 1 antibody is available for research use only.



Flow cytometry testing of human U937 cells with Apoptotic protease-activating factor 1 antibody at 1ug/million cells (blocked with goat sera); Red=cells alone, Green=isotype control, Blue= Apoptotic protease-activating factor 1 antibody.



Western blot testing of human 1) HEL and 2) human HL-60 cell lysate with Apoptotic protease-activating factor 1 antibody. Predicted molecular weight ~140 kDa.

Description

Apoptotic peptidase activating factor 1, also known as APAF1, is a protein which in humans is encoded by the APAF1 gene. This gene is mapped to chromosome 12q23. It encodes a cytoplasmic protein that initiates apoptosis. And it is an essential downstream effector of p53-mediated apoptosis. This protein contains several copies of the WD40 repeat domain, a caspase recruitment domain (CARD), and an ATPase domain (NB-ARC). In the presence of cytochrome c and dATP, APAF1 assembles into an oligomeric apoptosome, which is responsible for activation of procaspase-9 and maintenance of the enzymatic activity of processed caspase-9. Furthermore, APAF1 is inactivated in metastatic melanomas, leading to defects in the execution of apoptotic cell death. Additionally, APAF1 has been shown to interact with NLRP1, Caspase-9, AIP1, BCL2-like 1 and HSPA4.

Application Notes

Optimal dilution of the Apoptotic protease-activating factor 1 antibody should be determined by the researcher.

Immunogen

Recombinant human protein (amino acids M1-E1248) was used as the immunogen for the Apoptotic protease-activating factor 1 antibody.

Storage

After reconstitution, the Apoptotic protease-activating factor 1 antibody can be stored for up to one month at 4°C. For long-term, aliquot and store at -20°C. Avoid repeated freezing and thawing.