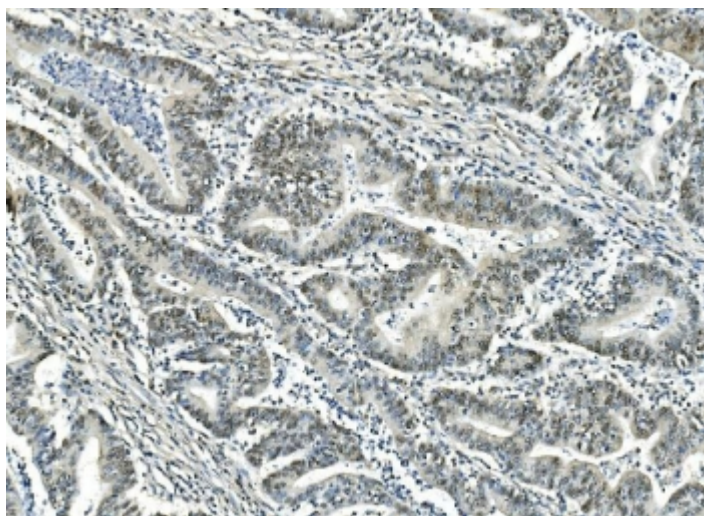


## ATF1 Antibody [clone 7F8] (RQ6079)

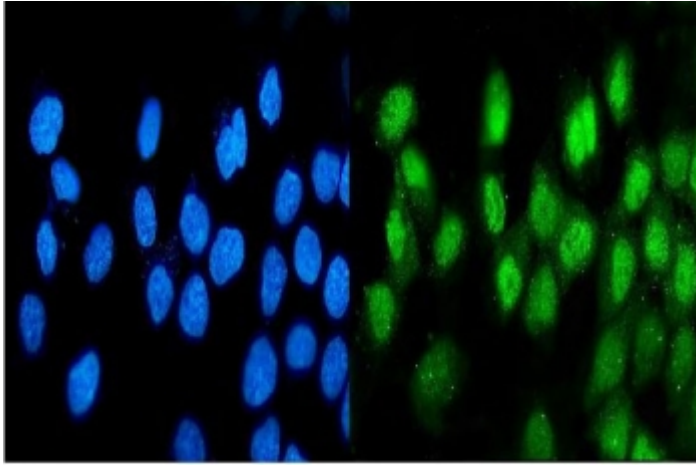
Catalog No.	Formulation	Size
RQ6079	0.5mg/ml if reconstituted with 0.2ml sterile DI water	100 ug

**Bulk quote request**

<b>Availability</b>	1-3 business days
<b>Species Reactivity</b>	Human
<b>Format</b>	Purified
<b>Clonality</b>	Monoclonal (mouse origin)
<b>Isotype</b>	Mouse IgG2a
<b>Clone Name</b>	7F8
<b>Purity</b>	Affinity purified
<b>Buffer</b>	Lyophilized from 1X PBS with 2% Trehalose and 0.025% sodium azide
<b>UniProt</b>	P18846
<b>Localization</b>	Nuclear
<b>Applications</b>	Western blot : 0.5-1ug/ml Immunohistochemistry : 1-2ug/ml Flow cytometry : 1-3ug/million cells Immunofluorescence : 2-4ug/ml
<b>Limitations</b>	This ATF1 antibody is available for research use only.



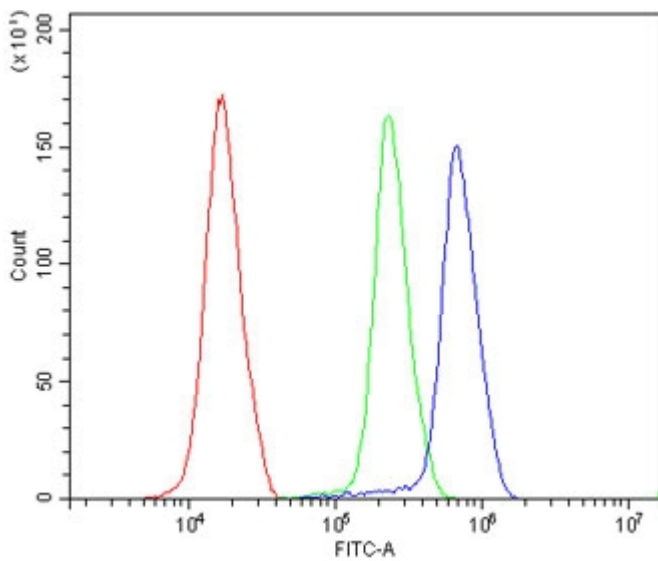
IHC staining of FFPE human rectal cancer with ATF1 antibody. HIER: boil tissue sections in pH8 EDTA for 20 min and allow to cool before testing.



Immunofluorescent staining of FFPE human A431 cells with ATF1 antibody (green) and DAPI nuclear stain (blue). HIER: steam section in pH6 citrate buffer for 20 min.



Western blot testing of human 1) HepG2, 2) HeLa and 3) SW620 lysate with ATF1 antibody. Routinely observed molecular weight: 29-35 kDa.



Flow cytometry testing of human K562 cells with ATF1 antibody at 1ug/million cells (blocked with goat sera); Red=cells alone, Green=isotype control, Blue= ATF1 antibody.

## Description

ATF1, also known as activating transcription factor 1, is a protein that in humans is encoded by the ATF1 gene. It is mapped to 12q13.12. This gene encodes an activating transcription factor, which belongs to the ATF subfamily and bZIP (basic-region leucine zipper) family. It influences cellular physiologic processes by regulating the expression of downstream target genes, which are related to growth, survival, and other cellular activities. This protein is phosphorylated at serine 63 in its kinase-inducible domain by serine/threonine kinases, cAMP-dependent protein kinase A, calmodulin-dependent protein kinase I/II, mitogen- and stress-activated protein kinase and cyclin-dependent kinase 3 (cdk-3). Its phosphorylation enhances its transactivation and transcriptional activities, and enhances cell transformation.

## Application Notes

Optimal dilution of the ATF1 antibody should be determined by the researcher.

## Immunogen

Recombinant human protein (amino acids M1-V271) was used as the immunogen for the ATF1 antibody.

## Storage

After reconstitution, the ATF1 antibody can be stored for up to one month at 4°C. For long-term, aliquot and store at -20°C. Avoid repeated freezing and thawing.