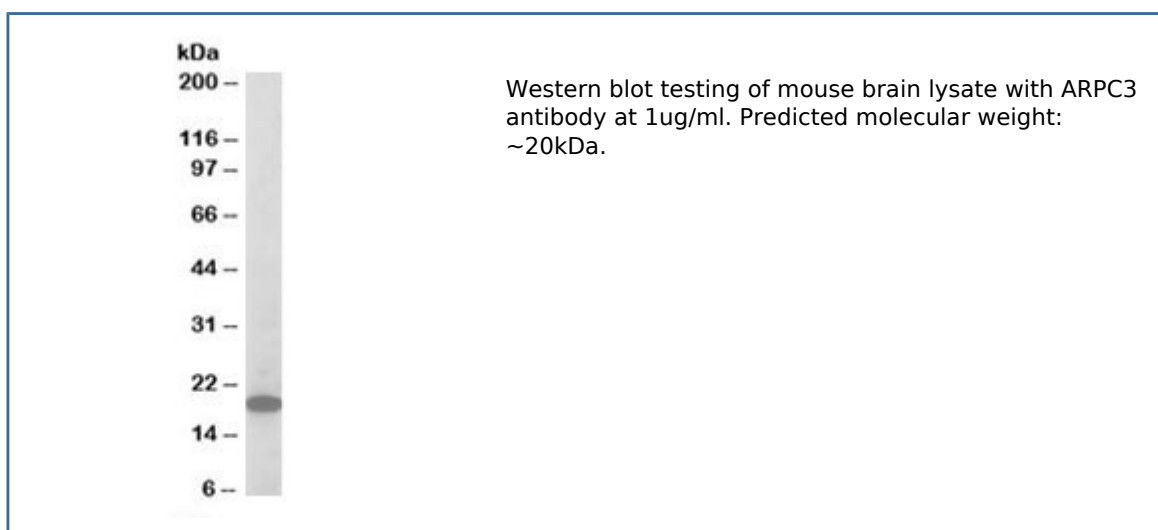


ARPC3 Antibody (R35728)

Catalog No.	Formulation	Size
R35728-100UG	0.5 mg/ml in 1X TBS, pH7.3, with 0.5% BSA (US sourced) and 0.02% sodium azide	100 ug

[Bulk quote request](#)

Availability	1-3 business days
Species Reactivity	Human, Mouse
Predicted Reactivity	Cow, Dog, Rat
Format	Antigen affinity purified
Clonality	Polyclonal (goat origin)
Isotype	Goat Ig
Purity	Antigen affinity
Gene ID	10094
Applications	Western blot : 1-3ug/ml ELISA (peptide) LOD : 1:16000
Limitations	This ARPC3 antibody is available for research use only.



Description

Additional name(s) for this target protein: Actin related protein 2/3 complex subunit 3

Application Notes

Optimal dilution of the ARPC3 antibody should be determined by the researcher.

Immunogen

Amino acids RQFMNKSLSGPGQ were used as the immunogen for this ARPC3 antibody.

Storage

Aliquot and store the ARPC3 antibody at -20oC.