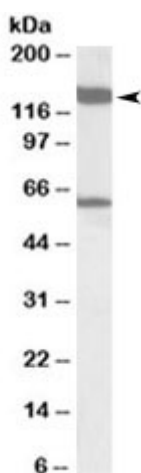


## AF10 Antibody [MLLT10] (R35666)

Catalog No.	Formulation	Size
R35666-100UG	0.5 mg/ml in 1X TBS, pH7.3, with 0.5% BSA (US sourced) and 0.02% sodium azide	100 ug

[Bulk quote request](#)

<b>Availability</b>	1-3 business days
<b>Species Reactivity</b>	Human, Mouse, Rat
<b>Predicted Reactivity</b>	Cow, Dog
<b>Format</b>	Antigen affinity purified
<b>Clonality</b>	Polyclonal (goat origin)
<b>Isotype</b>	Goat Ig
<b>Purity</b>	Antigen affinity
<b>Gene ID</b>	8028
<b>Applications</b>	Western blot : 1-3ug/ml ELISA (peptide) LOD : 1:32000
<b>Limitations</b>	This AF10 antibody is available for research use only.



Western blot testing of rat testis lysate with AF10 antibody at 1ug/ml. Predicted/observed molecular weight: ~109/140kDa.

## Description

Additional name(s) for this target protein: Myeloid/lymphoid or mixed-lineage leukemia translocated to 10; MLLT10

## Application Notes

Optimal dilution of the AF10 antibody should be determined by the researcher.

## Immunogen

Amino acids RLEDTTARFTNAN were used as the immunogen for this AF10 antibody.

## Storage

Aliquot and store the AF10 antibody at -20oC.