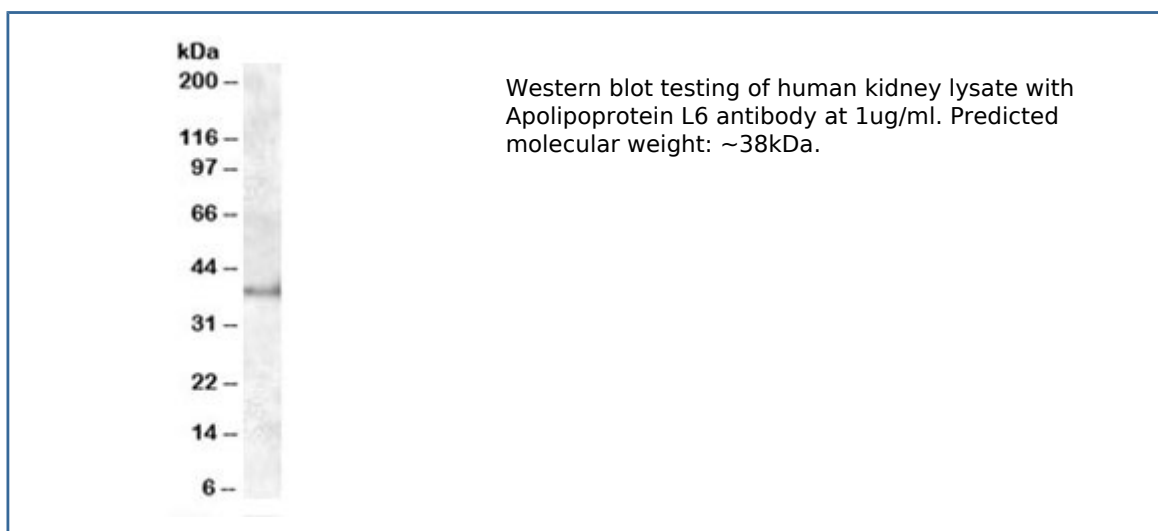


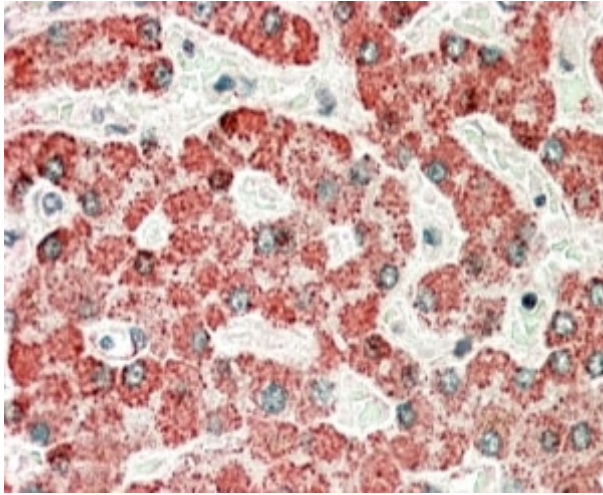
## Apolipoprotein L6 Antibody (R35423)

Catalog No.	Formulation	Size
R35423-100UG	0.5 mg/ml in 1X TBS, pH7.3, with 0.5% BSA (US sourced) and 0.02% sodium azide	100 ug

[Bulk quote request](#)

<b>Availability</b>	1-3 business days
<b>Species Reactivity</b>	Human
<b>Format</b>	Antigen affinity purified
<b>Clonality</b>	Polyclonal (goat origin)
<b>Isotype</b>	Goat Ig
<b>Purity</b>	Antigen affinity
<b>Gene ID</b>	80830
<b>Applications</b>	Western blot : 1-3ug/ml Immunohistochemistry (FFPE) : 5-10ug/ml ELISA (peptide) LOD : 1:8000
<b>Limitations</b>	This Apolipoprotein L6 antibody is available for research use only.





IHC staining of FFPE human liver with Apolipoprotein L6 antibody at 5ug/ml. HIER: microwaved with pH9 Tris/EDTA buffer, HRP-staining.

## Description

Additional name(s) for this target protein: APOL-VI; APOL6

## Application Notes

Optimal dilution of the Apolipoprotein L6 antibody should be determined by the researcher.

## Immunogen

Amino acids QRDEDDAPLCED were used as the immunogen for this Apolipoprotein L6 antibody.

## Storage

Aliquot and store the Apolipoprotein L6 antibody at -20oC.