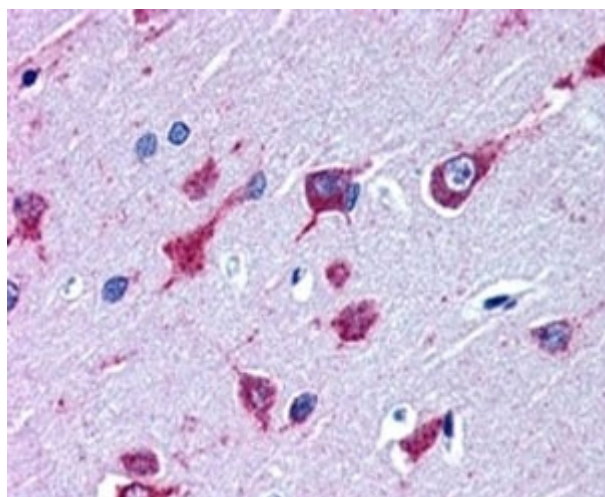


ALS2 Antibody (R34722)

Catalog No.	Formulation	Size
R34722-100UG	0.5 mg/ml in 1X TBS, pH7.3, with 0.5% BSA (US sourced) and 0.02% sodium azide	100 ug

[Bulk quote request](#)

Availability	1-3 business days
Species Reactivity	Human
Predicted Reactivity	Cow, Dog, Mouse, Rat
Format	Antigen affinity purified
Clonality	Polyclonal (goat origin)
Isotype	Goat Ig
Purity	Antigen affinity
Gene ID	57679
Applications	Immunohistochemistry (FFPE) : 3-5ug/ml ELISA (peptide) LOD : 1:8000
Limitations	This ALS2 antibody is available for research use only.



IHC testing of FFPE human cortex with ALS2 antibody at 4ug/ml. HIER: steamed with pH6 citrate buffer, AP-staining.

Description

Additional name(s) for this target protein: Amyotrophic lateral sclerosis 2

Application Notes

Optimal dilution of the ALS2 antibody should be determined by the researcher.

Immunogen

Amino acids LKACYYQIQREKLN were used as the immunogen for this ALS2 antibody.

Storage

Aliquot and store the ALS2 antibody at -20oC.