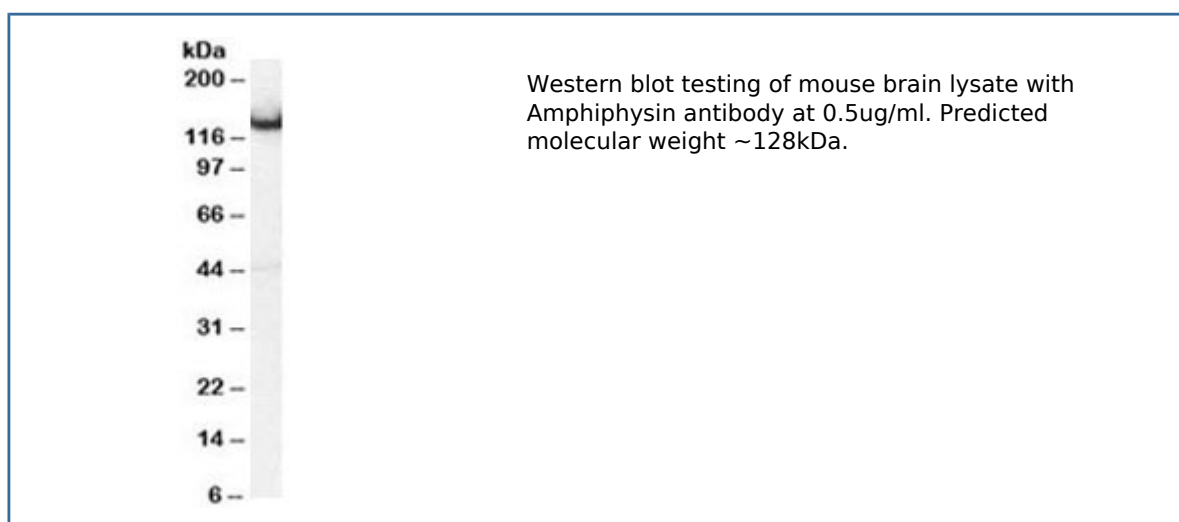


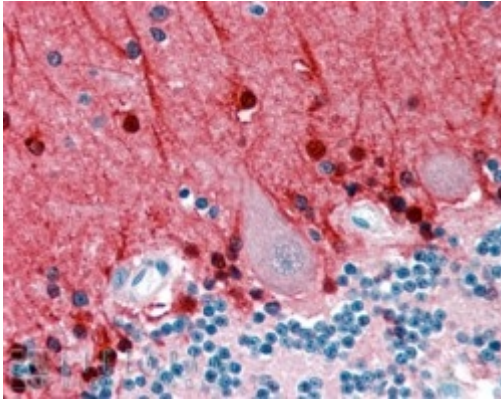
Amphiphysin Antibody (R34619)

Catalog No.	Formulation	Size
R34619-100UG	0.5 mg/ml in 1X TBS, pH7.3, with 0.5% BSA (US sourced) and 0.02% sodium azide	100 ug

[Bulk quote request](#)

Availability	1-3 business days
Species Reactivity	Human, Mouse
Predicted Reactivity	Dog, Rat
Format	Antigen affinity purified
Clonality	Polyclonal (goat origin)
Isotype	Goat Ig
Purity	Antigen affinity
Gene ID	273
Applications	Western blot : 0.5-2ug/ml Immunohistochemistry (FFPE) : 2-4ug/ml ELISA (peptide) LOD : 1:16000
Limitations	This Amphiphysin antibody is available for research use only.





IHC staining of FFPE human cerebellum with Amphiphysin antibody at 2.5ug/ml. HIER: steamed with pH6 citrate buffer, AP-staining.

Description

Additional name(s) for this target protein: AMPH

Application Notes

Optimal dilution of the Amphiphysin antibody should be determined by the researcher.

Immunogen

Amino acids KRKDESRISKAE were used as the immunogen for this Amphiphysin antibody.

Storage

Aliquot and store the Amphiphysin antibody at -20oC.