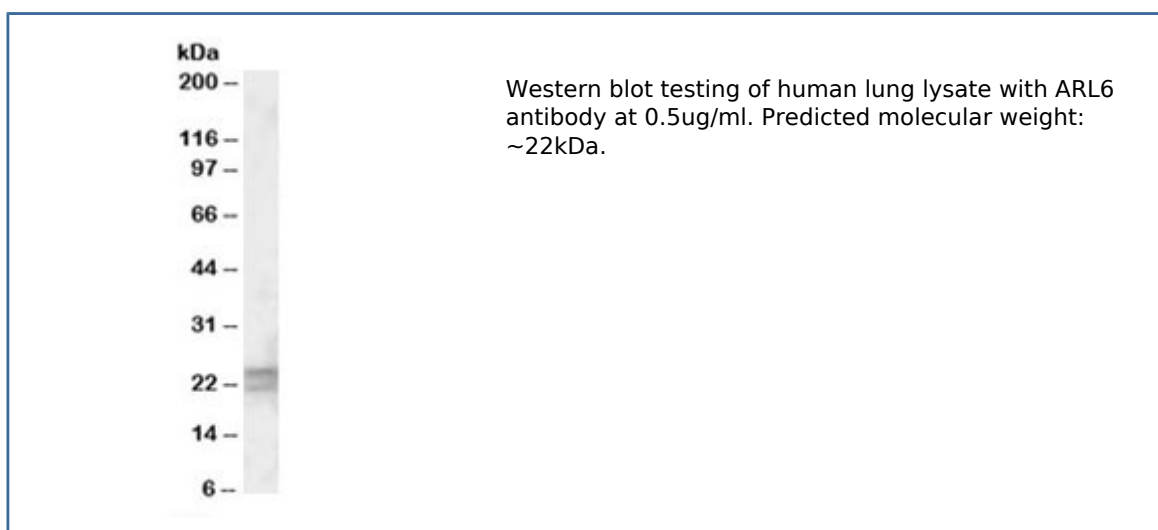


## ARL6 Antibody (R34587)

Catalog No.	Formulation	Size
R34587-100UG	0.5 mg/ml in 1X TBS, pH7.3, with 0.5% BSA (US sourced) and 0.02% sodium azide	100 ug

[Bulk quote request](#)

<b>Availability</b>	1-3 business days
<b>Species Reactivity</b>	Human
<b>Predicted Reactivity</b>	Cow, Dog, Mouse
<b>Format</b>	Antigen affinity purified
<b>Clonality</b>	Polyclonal (goat origin)
<b>Isotype</b>	Goat Ig
<b>Purity</b>	Antigen affinity
<b>Gene ID</b>	379
<b>Applications</b>	Western blot : 0.3-1ug/ml ELISA (peptide) LOD : 1:64000
<b>Limitations</b>	This ARL6 antibody is available for research use only.



## Description

Additional name(s) for this target protein: ADP-ribosylation factor-like 4D/6; ARL4D

## Application Notes

Optimal dilution of the ARL6 antibody should be determined by the researcher.

## Immunogen

Amino acids KQDQPGALSAAEVEKR were used as the immunogen for this ARL6 antibody.

## Storage

Aliquot and store the ARL6 antibody at -20oC.