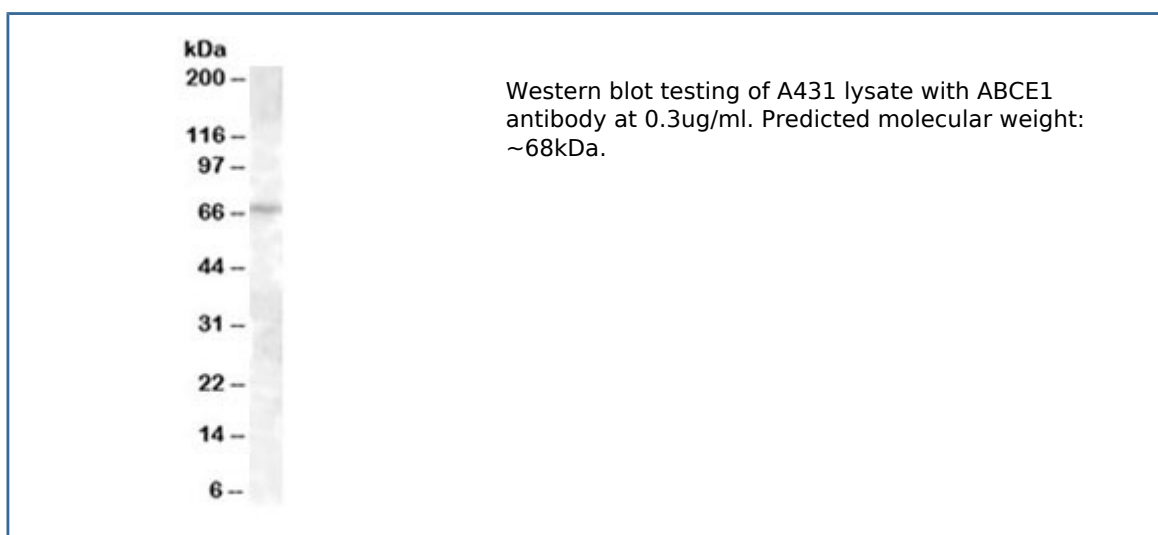


ABCE1 Antibody (R34523)

| Catalog No. | Formulation | Size |
|--------------|-------------------------------------------------------------------------------|--------|
| R34523-100UG | 0.5 mg/ml in 1X TBS, pH7.3, with 0.5% BSA (US sourced) and 0.02% sodium azide | 100 ug |

[Bulk quote request](#)

| | |
|-----------------------------|-----------------------------------------------------------|
| Availability | 1-3 business days |
| Species Reactivity | Human |
| Predicted Reactivity | Cow, Dog, Mouse, Rat |
| Format | Antigen affinity purified |
| Clonality | Polyclonal (goat origin) |
| Isotype | Goat Ig |
| Purity | Antigen affinity |
| Gene ID | 6059 |
| Applications | Western blot : 0.3-1ug/ml ELISA (peptide) LOD : 1:8000 |
| Limitations | This ABCE1 antibody is available for research use only. |



Description

Additional name(s) for this target protein: ATP-binding cassette, sub-family E, member 1, RNase L inhibitor

Application Notes

Optimal dilution of the ABCE1 antibody should be determined by the researcher.

Immunogen

Amino acids KLNSIKDVEQKK were used as the immunogen for this ABCE1 antibody.

Storage

Aliquot and store the ABCE1 antibody at -20oC.