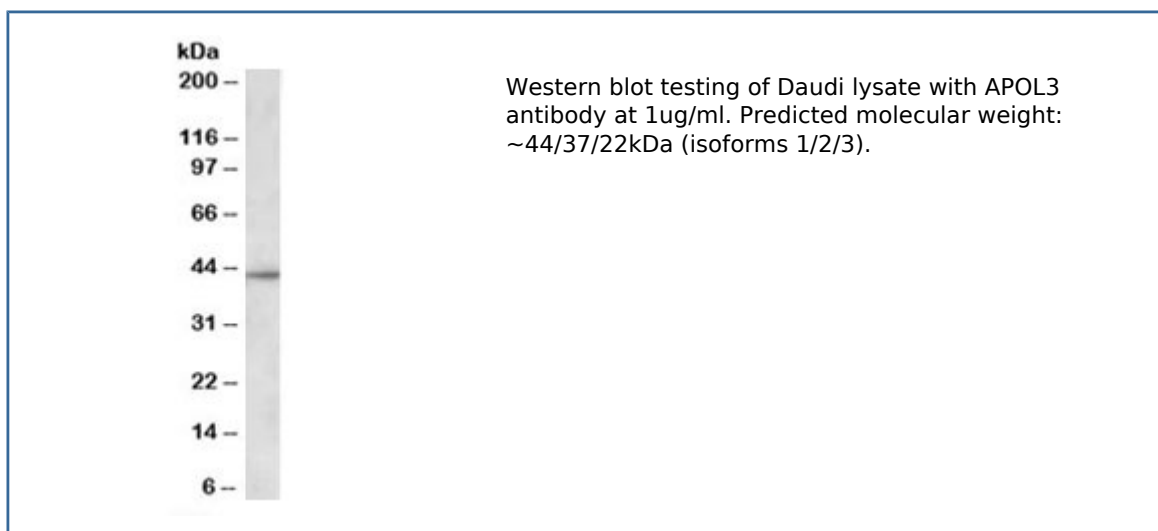


APOL3 Antibody (R33879)

Catalog No.	Formulation	Size
R33879-100UG	0.5 mg/ml in 1X TBS, pH7.3, with 0.5% BSA (US sourced) and 0.02% sodium azide	100 ug

[Bulk quote request](#)

Availability	1-3 business days
Species Reactivity	Human
Format	Antigen affinity purified
Clonality	Polyclonal (goat origin)
Isotype	Goat Ig
Purity	Antigen affinity
Gene ID	80833
Applications	Western blot : 1-3ug/ml ELISA (peptide) LOD : 1:1000
Limitations	This APOL3 antibody is available for research use only.



Description

Additional name(s) for this target protein: Apolipoprotein L3

Application Notes

Optimal dilution of the APOL3 antibody should be determined by the researcher.

1. This APOL3 antibody is specific for isoforms 1 and 2/3 of the protein.

Immunogen

Amino acids ELTQIYQRLNPCHTH were used as the immunogen for this APOL3 antibody.

Storage

Aliquot and store the APOL3 antibody at -20oC.