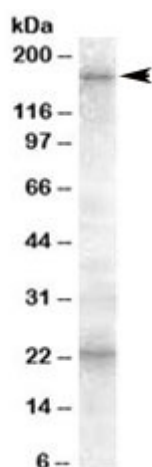


ABCC8 Antibody / SUR1 (R33765)

Catalog No.	Formulation	Size
R33765-100UG	0.5 mg/ml in 1X TBS, pH7.3, with 0.5% BSA (US sourced) and 0.02% sodium azide	100 ug

[Bulk quote request](#)

Availability	1-3 business days
Species Reactivity	Human
Predicted Reactivity	Mouse, Rat, Dog
Format	Antigen affinity purified
Clonality	Polyclonal (goat origin)
Isotype	Goat Ig
Purity	Antigen affinity
Gene ID	6833
Applications	Western blot : 0.5-1.5ug/ml ELISA (peptide) LOD : 1:8000
Limitations	This ABCC8 antibody is available for research use only.



Western blot testing of human cerebellum lysate with ABCC8 antibody at 0.5ug/ml. The expected ~170 kDa band and the additional ~23 kDa band are both blocked by the immunizing peptide.

Description

Additional name(s) for this target protein: ATP-binding cassette, sub-family C (CFTR/MRP), member 8; SUR1

Application Notes

Optimal dilution of the ABCC8 antibody should be determined by the researcher.

Immunogen

Amino acids EFDKPEKLLSRKD were used as the immunogen for this ABCC8 antibody.

Storage

Aliquot and store the ABCC8 antibody at -20oC.