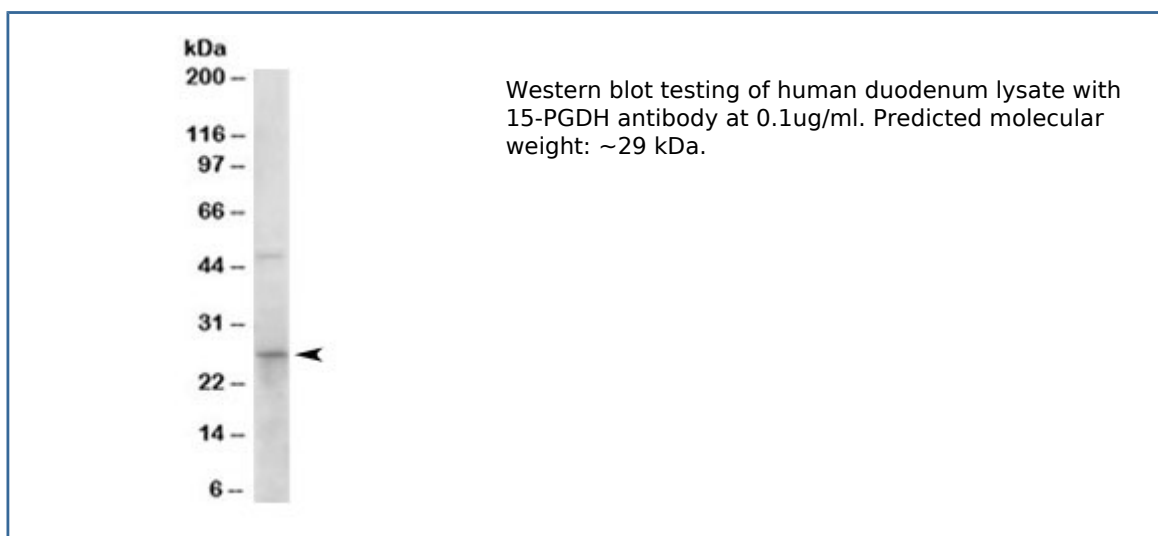


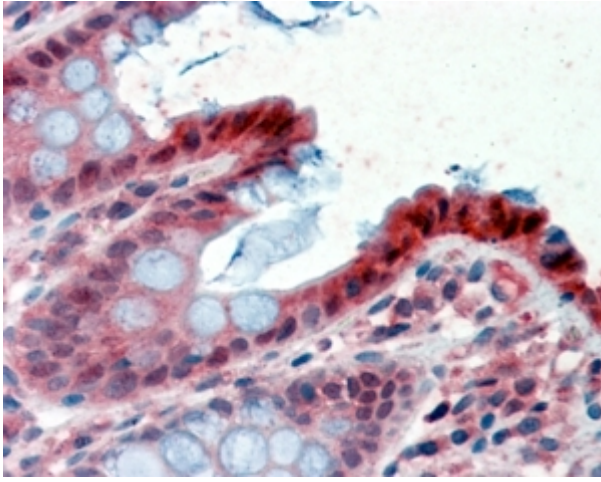
15-PGDH Antibody / HPGD (R33680)

Catalog No.	Formulation	Size
R33680-100UG	0.5 mg/ml in 1X TBS, pH7.3, with 0.5% BSA (US sourced) and 0.02% sodium azide	100 ug

[Bulk quote request](#)

Availability	1-3 business days
Species Reactivity	Human
Format	Antigen affinity purified
Clonality	Polyclonal (goat origin)
Isotype	Goat Ig
Purity	Antigen affinity
Gene ID	3248
Applications	Western blot : 0.1-0.5ug/ml Immunohistochemistry (FFPE) : 2-4ug/ml ELISA (peptide) LOD : 1:128000
Limitations	This 15-PGDH antibody is available for research use only.





IHC staining of FFPE human colon with 15-PGDH antibody at 2.5ug/ml. HIER: steamed with pH6 citrate buffer, AP-staining.

Description

Additional name(s) for this target protein: Hydroxyprostaglandin dehydrogenase 15; Prostaglandin dehydrogenase 1; HPGD

Application Notes

Optimal dilution of the 15-PGDH antibody should be determined by the researcher.

Immunogen

Amino acids DYDTTPFQAKTQ were used as the immunogen for this 15-PGDH antibody.

Storage

Aliquot and store the 15-PGDH antibody at -20oC.