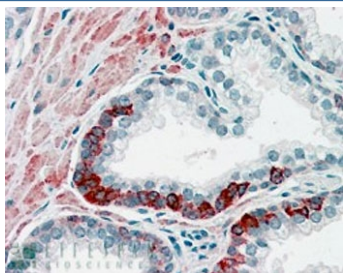


## ADAM12 Antibody (R33112)

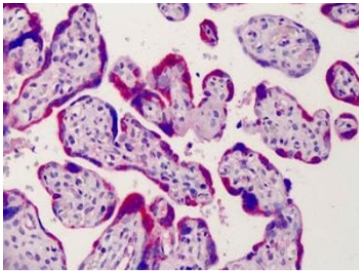
Catalog No.	Formulation	Size
R33112-100UG	0.5 mg/ml in 1X TBS, pH7.3, with 0.5% BSA (US sourced) and 0.02% sodium azide	100 ug

[Bulk quote request](#)

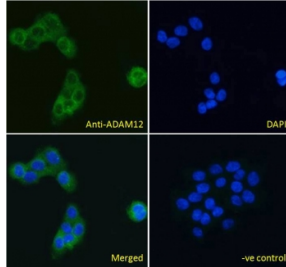
Availability	1-3 business days
Species Reactivity	Human
Format	Antigen affinity purified
Host	Goat
Clonality	Polyclonal (goat origin)
Isotype	Goat Ig
Purity	Antigen affinity
UniProt	O43184
Localization	Cytoplasmic, membranous
Applications	Immunohistochemistry (FFPE) : 3-5ug/ml IF/ICC : 10ug/ml FACS : 10ug/10 <sup>6</sup> cells in 0.2ml ELISA (peptide) LOD : 1:64000
Limitations	This ADAM12 antibody is available for research use only.



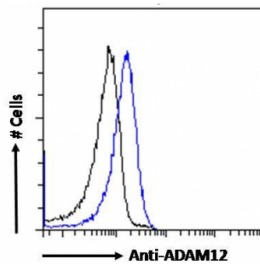
IHC staining of FFPE human prostate with ADAM12 antibody at 4ug/ml. HIER: steamed with pH6 citrate buffer, AP-staining.



IHC staining of FFPE human placenta with ADAM12 antibody at 4ug/ml. HIER: steamed with pH6 citrate buffer, AP-staining.



IF/ICC testing of fixed and permeabilized human A431 cells with ADAM12 antibody (green) at 10ug/ml and DAPI nuclear stain (blue).



FACS testing of fixed and permeabilized human HeLa cells with ADAM12 antibody (blue) at 10ug/10<sup>6</sup> cells in 0.2ml and naive goat Ig (black).

## Description

Additional name(s) for this target protein: A disintegrin and metalloproteinase domain 12

## Application Notes

Optimal dilution of the ADAM12 antibody should be determined by the researcher.

1. This Ab can detect the long and short form of the protein.

## Immunogen

Amino acids AARPLPVSPARALC were used as the immunogen for this ADAM12 antibody. (1)

## Storage

Aliquot and store the ADAM12 antibody at -20oC.

