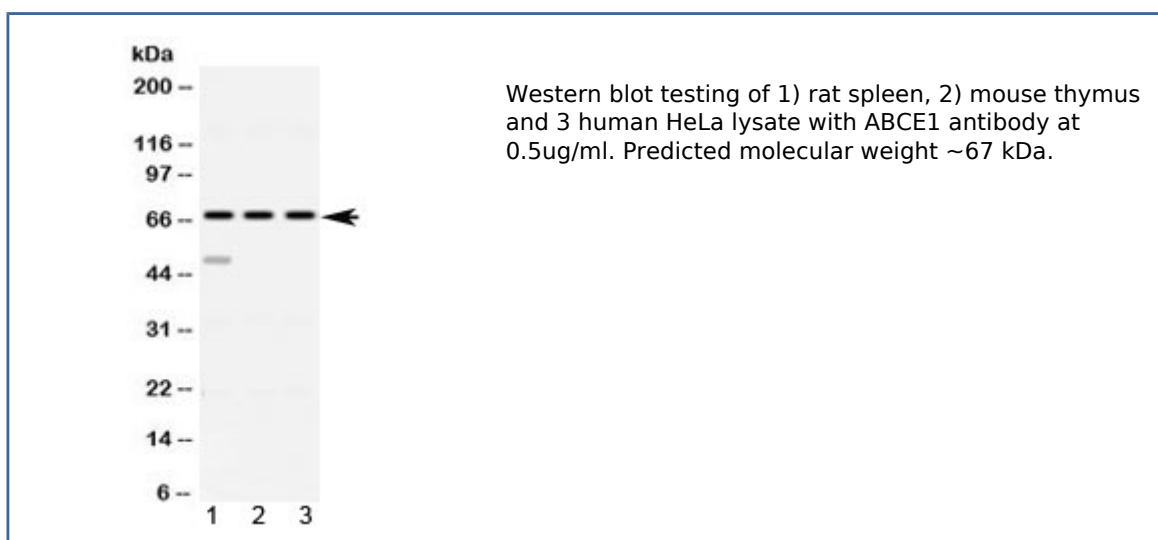


## ABCE1 Antibody (R32488)

Catalog No.	Formulation	Size
R32488	0.5mg/ml if reconstituted with 0.2ml sterile DI water	100 ug

**Bulk quote request**

<b>Availability</b>	1-3 business days
<b>Species Reactivity</b>	Human, Mouse, Rat
<b>Format</b>	Antigen affinity purified
<b>Clonality</b>	Polyclonal (rabbit origin)
<b>Isotype</b>	Rabbit IgG
<b>Purity</b>	Antigen affinity
<b>Buffer</b>	Lyophilized from 1X PBS with 2.5% BSA and 0.025% sodium azide
<b>UniProt</b>	P61221
<b>Localization</b>	Cytoplasmic
<b>Applications</b>	Western blot : 0.5-1ug/ml
<b>Limitations</b>	This ABCE1 antibody is available for research use only.



## Description

ATP binding cassette E1 (ABCE1, also RNase L inhibitor) is an ATPase found in humans involved in viral assembly. It is a member of the ATP-binding cassette (ABC) transporters superfamily and OABP subfamily. ABCE1 inhibits the action of ribonuclease L. Ribonuclease L normally binds to 2-5A (5'-phosphorylated 2',5'-linked oligoadenylates) and inhibits the interferon-regulated 2-5A/RNase L pathway, which is used by viruses. ABCE1 heterodimerize with ribonuclease L and prevents its interaction with 2-5A, antagonizing the anti-viral properties of ribonuclease L, and allow the virus to synthesize viral proteins. It has also been implicated to have an effect in tumorcell proliferation and antiapoptosis.

## Application Notes

Differences in protocols and secondary/substrate sensitivity may require the ABCE1 antibody to be titrated for optimal performance.

## Immunogen

Amino acids K419-D599 from the human protein were used as the immunogen for the ABCE1 antibody.

## Storage

After reconstitution, the ABCE1 antibody can be stored for up to one month at 4oC. For long-term, aliquot and store at -20oC. Avoid repeated freezing and thawing.