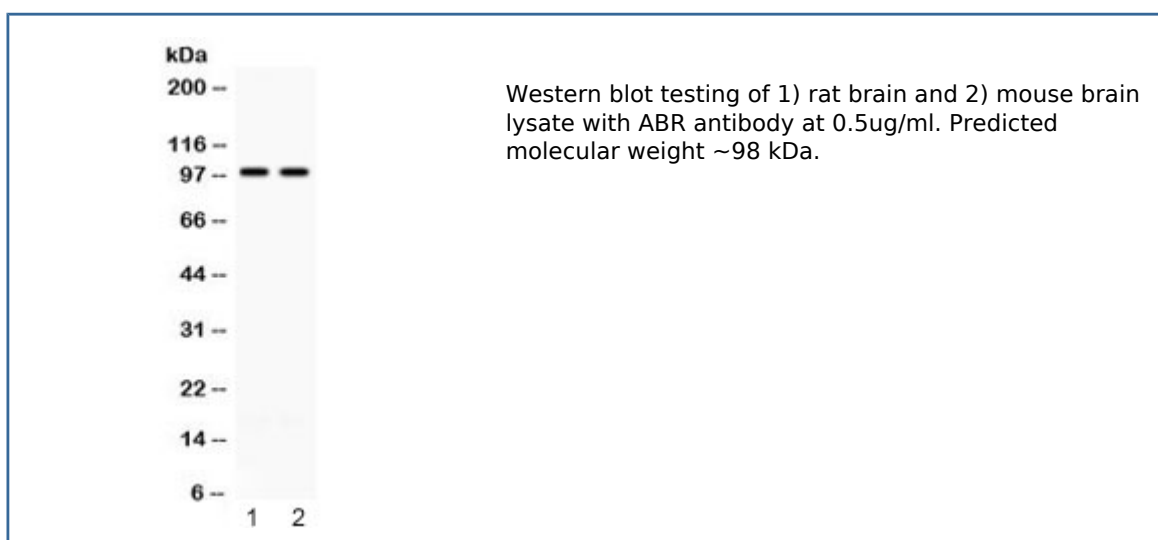


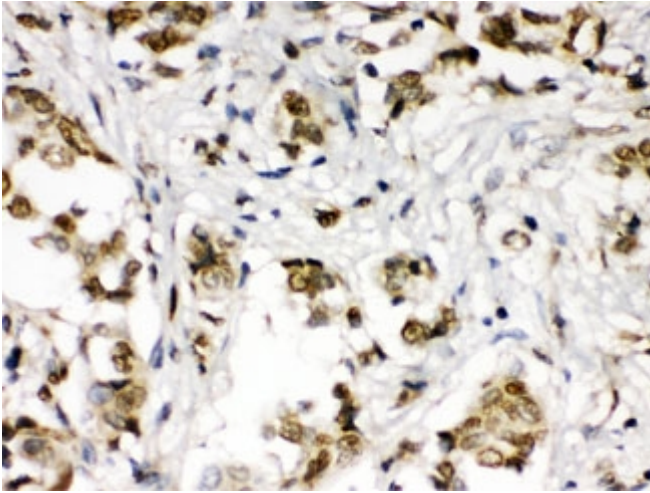
ABR Antibody / Active BCR related (R32457)

Catalog No.	Formulation	Size
R32457	0.5mg/ml if reconstituted with 0.2ml sterile DI water	100 ug

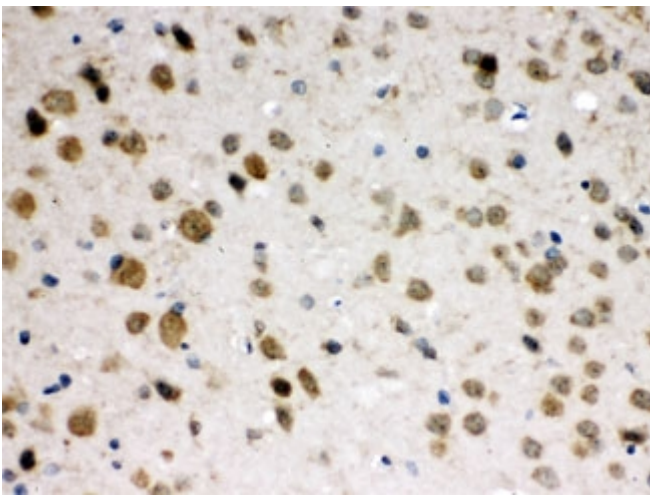
Bulk quote request

Availability	1-3 business days
Species Reactivity	Human, Mouse, Rat
Format	Antigen affinity purified
Clonality	Polyclonal (rabbit origin)
Isotype	Rabbit IgG
Purity	Antigen affinity
Buffer	Lyophilized from 1X PBS with 2.5% BSA and 0.025% sodium azide
UniProt	Q12979
Localization	Cytoplasmic, membranous
Applications	Western blot : 0.5-1ug/ml IHC (FFPE) : 1-2ug/ml
Limitations	This ABR antibody is available for research use only.

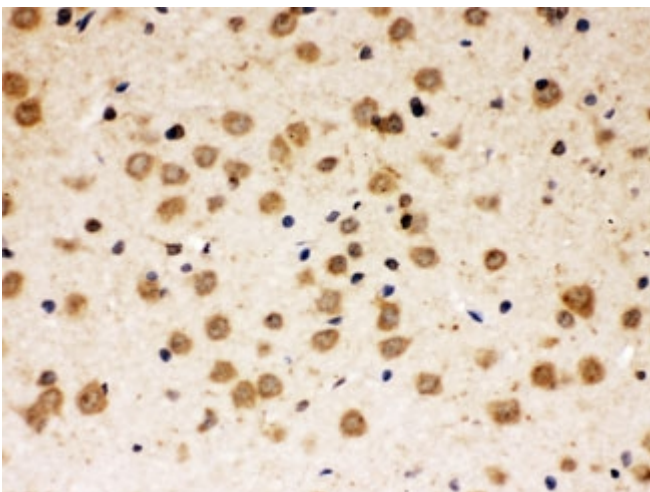




IHC testing of FFPE human breast cancer tissue with ABR antibody at 1ug/ml. HIER: steam in pH6 citrate buffer and allow to cool prior to staining.



IHC testing of FFPE mouse brain with ABR antibody at 1ug/ml. HIER: steam in pH6 citrate buffer and allow to cool prior to staining.



IHC testing of FFPE rat brain with ABR antibody at 1ug/ml. HIER: steam in pH6 citrate buffer and allow to cool prior to staining.

Description

This ABR gene encodes a protein that is similar to the protein encoded by the breakpoint cluster region gene located on chromosome 22. The protein encoded by this gene contains a GTPase-activating protein domain, a domain found in members of the Rho family of GTP-binding proteins. Functional studies in mice determined that this protein plays a role in vestibular morphogenesis. Alternatively spliced transcript variants have been reported for this gene.

Application Notes

Optimal dilution of the ABR antibody should be determined by the researcher.

Immunogen

Amino acids HPFPDHELEDMMKISALKSEIQKEKANKGQSRAIERL from the human protein were used as the immunogen for the ABR antibody.

Storage

Prior to reconstitution, store at 4oC. After reconstitution, the ABR antibody can be stored for up to one month at 4oC. For long-term, aliquot and store at -20oC. Avoid repeated freezing and thawing.