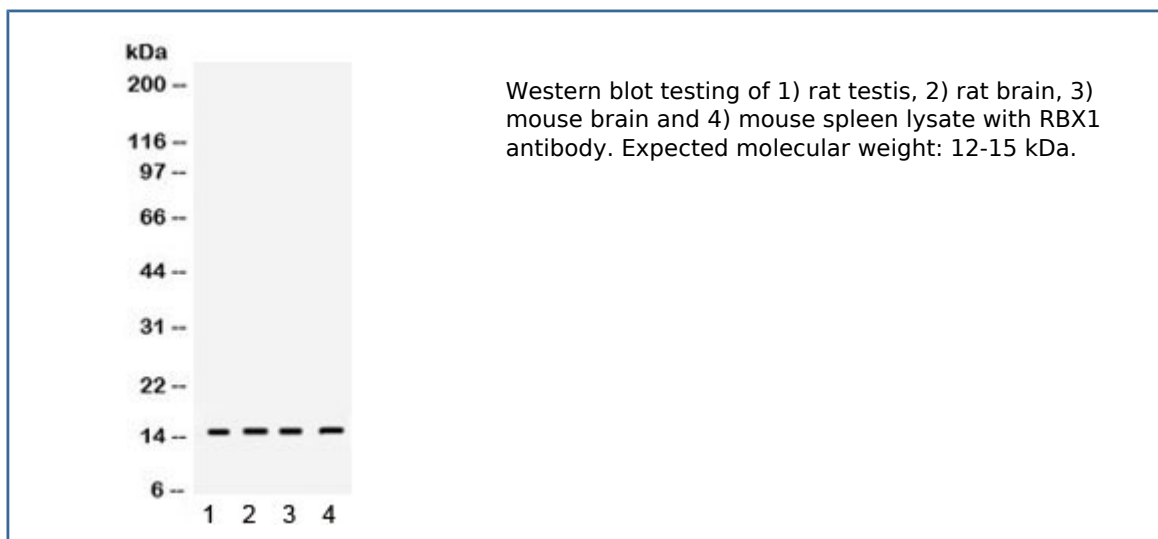


## RBX1 Antibody / ROC1 (R32161)

Catalog No.	Formulation	Size
R32161	0.5mg/ml if reconstituted with 0.2ml sterile DI water	100 ug

[Bulk quote request](#)

<b>Availability</b>	1-3 business days
<b>Species Reactivity</b>	Human, Mouse, Rat
<b>Format</b>	Antigen affinity purified
<b>Clonality</b>	Polyclonal (rabbit origin)
<b>Isotype</b>	Rabbit IgG
<b>Purity</b>	Antigen affinity
<b>Buffer</b>	Lyophilized from 1X PBS with 2.5% BSA and 0.025% sodium azide
<b>UniProt</b>	P62877
<b>Applications</b>	Western blot : 0.1-0.5ug/ml
<b>Limitations</b>	This RBX1 antibody is available for research use only.



## Description

RING-box protein 1, also known as ROC1, is a protein that in humans is encoded by the RBX1 gene. This gene is mapped to chromosome 22q13.2 based on an alignment of the RBX1 sequence with the genomic sequence. ROC1 is recruited by cullin-1 to form a quaternary SCF (HOS)-ROC1 holoenzyme (with SKP1 and the BTRCP homolog HOS). SCF (HOS)-ROC1 binds IKK-beta-phosphorylated I-kappa-B-alpha and catalyzes its ubiquitination in the presence of ubiquitin, E1, and CDC34. Conclusively, ROC1 plays a unique role in the ubiquitination reaction by heterodimerizing with cullin-1 to catalyze ubiquitin polymerization.

## Application Notes

Optimal dilution of the RBX1 antibody should be determined by the researcher.

## Immunogen

Amino acids NHAFHFHCISRWLKTRQVCPLDNREWEFQKYGH of human ROC1/RBX1 were used as the immunogen for the RBX1 antibody.

## Storage

After reconstitution, the RBX1 antibody can be stored for up to one month at 4oC. For long-term, aliquot and store at -20oC. Avoid repeated freezing and thawing.