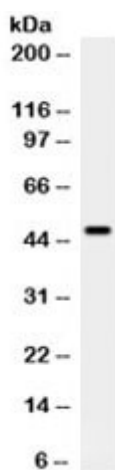


## PTEN Antibody (R32154)

Catalog No.	Formulation	Size
R32154	0.5mg/ml if reconstituted with 0.2ml sterile DI water	100 ug

[Bulk quote request](#)

<b>Availability</b>	1-3 business days
<b>Species Reactivity</b>	Human, Rat
<b>Format</b>	Antigen affinity purified
<b>Clonality</b>	Polyclonal (rabbit origin)
<b>Isotype</b>	Rabbit IgG
<b>Purity</b>	Antigen affinity
<b>Buffer</b>	Lyophilized from 1X PBS with 2.5% BSA and 0.025% sodium azide
<b>UniProt</b>	P60484
<b>Localization</b>	Cytoplasmic, nuclear
<b>Applications</b>	Western blot : 0.1-0.5ug/ml
<b>Limitations</b>	This PTEN antibody is available for research use only.



Western blot testing of rat brain with PTEN antibody. Expected molecular weight: 47~55 kDa (isoform 1), 65~70 kDa ('long' isoform).

## Description

PTEN is also known as BZS, DEC, CWS1, GLM2, MHAM, TEP1, PTEN1. It is mapped to 10q23.3. This gene was identified as a tumor suppressor that is mutated in a large number of cancers at high frequency. The protein encoded by this gene is a phosphatidylinositol-3,4,5-trisphosphate 3-phosphatase. It contains a tensin like domain as well as a catalytic domain similar to that of the dual specificity protein tyrosine phosphatases. Unlike most of the protein tyrosine phosphatases, this protein preferentially dephosphorylates phosphoinositide substrates. The PTEN structure reveals a phosphatase domain that is similar to protein phosphatases but also has an enlarged active site important for the accommodation of the phosphoinositide substrate.

## Application Notes

Optimal dilution of the PTEN antibody should be determined by the researcher.

## Immunogen

Amino acids 91-403 of human PTEN were used as the immunogen for the PTEN antibody.

## Storage

After reconstitution, the PTEN antibody can be stored for up to one month at 4°C. For long-term, aliquot and store at -20°C. Avoid repeated freezing and thawing.