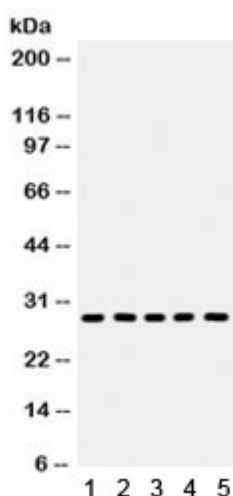


Aquaporin 1 Antibody (R32050)

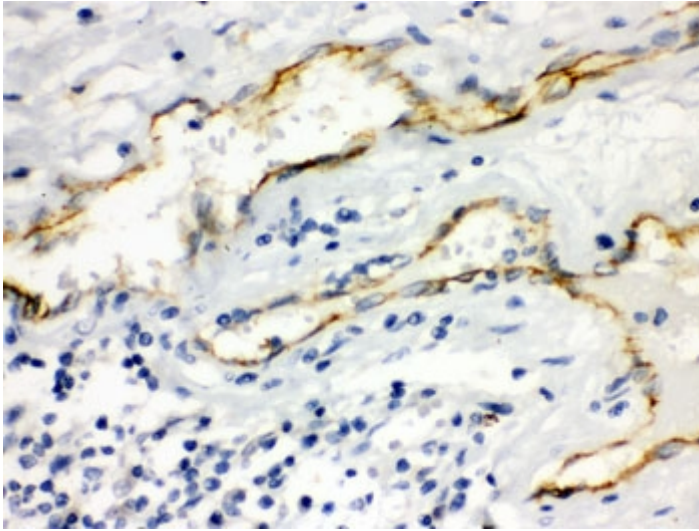
Catalog No.	Formulation	Size
R32050	0.5mg/ml if reconstituted with 0.2ml sterile DI water	100 ug

[Bulk quote request](#)

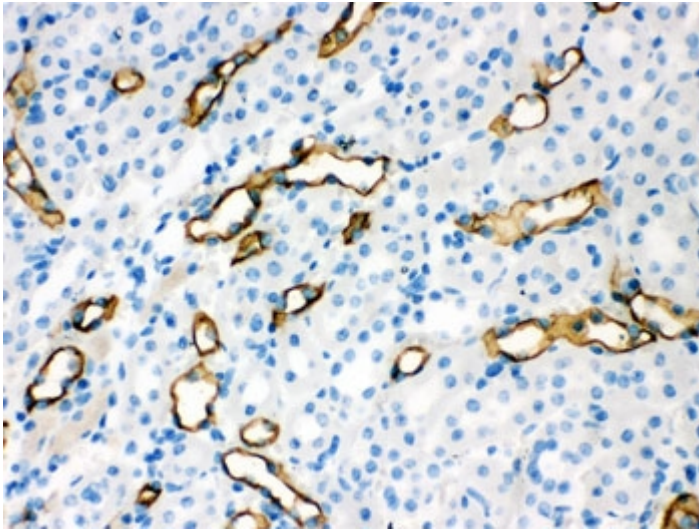
Availability	1-3 business days
Species Reactivity	Human, Mouse, Rat
Format	Antigen affinity purified
Clonality	Polyclonal (rabbit origin)
Isotype	Rabbit IgG
Purity	Antigen affinity
Buffer	Lyophilized from 1X PBS with 2.5% BSA and 0.025% sodium azide
UniProt	P29972
Localization	Membrane
Applications	Western blot : 0.1-0.5ug/ml Immunohistochemistry (FFPE) : 0.5-1ug/ml Immunofluorescence (FFPE) : 2-4ug/ml Flow cytometry : 1-3ug/million cells
Limitations	This Aquaporin 1 antibody is available for research use only.



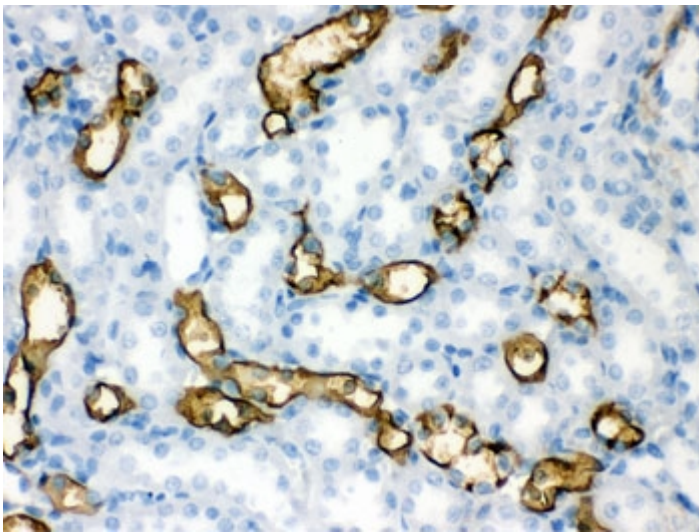
Western blot testing of 1) rat kidney, 2) rat lung, 3) rat heart, 4) rat PC-12 and 5) mouse HEPA lysate with Aquaporin 1 antibody. Expected/observed molecular weight ~28 kDa.



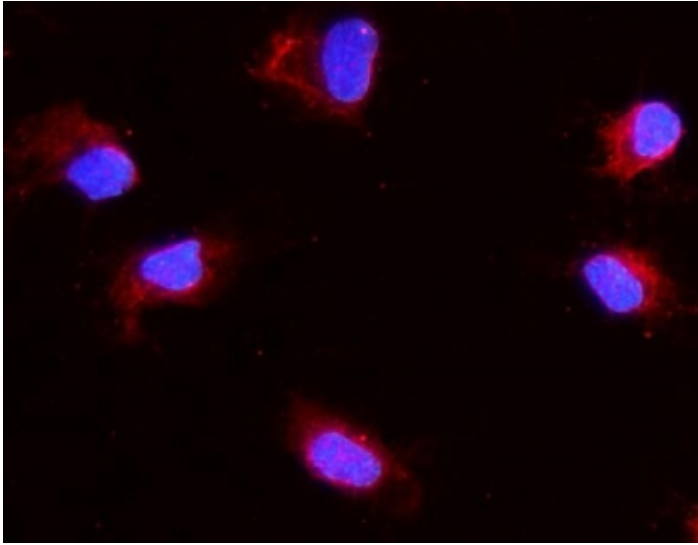
IHC testing of FFPE human intestinal cancer with Aquaporin 1 antibody. HIER: Boil the paraffin sections in pH 6, 10mM citrate buffer for 20 minutes and allow to cool prior to staining.



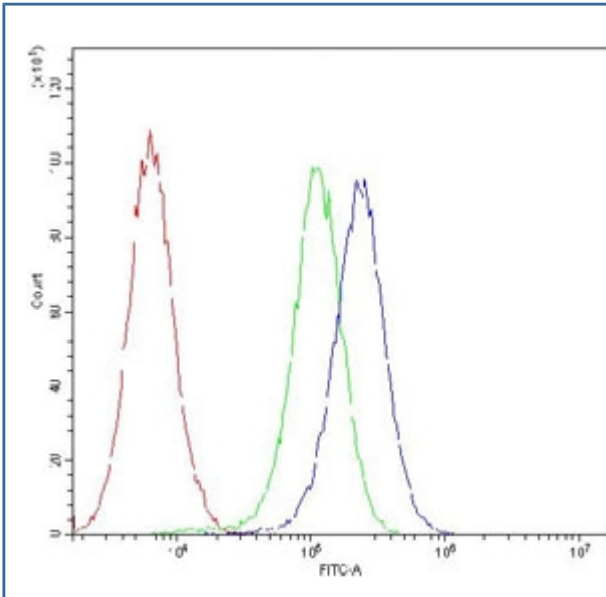
IHC testing of FFPE mouse kidney with Aquaporin 1 antibody. HIER: Boil the paraffin sections in pH 6, 10mM citrate buffer for 20 minutes and allow to cool prior to staining.



IHC testing of FFPE rat kidney with Aquaporin 1 antibody. HIER: Boil the paraffin sections in pH 6, 10mM citrate buffer for 20 minutes and allow to cool prior to staining.



Immunofluorescent staining of FFPE rat NRK cells with Aquaporin 1 antibody (red) and DAPI nuclear stain (blue). HIER: steam section in pH6 citrate buffer for 20 min.



Flow cytometry testing of human U-2 OS cells with Aquaporin 1 antibody at 1ug/million cells (blocked with goat sera); Red=cells alone, Green=isotype control, Blue= Aquaporin 1 antibody.

Description

Aquaporin 1 is a 28-kD integral protein thought at first to be a breakdown product of the Rh polypeptide but was later shown to be a unique molecule that is abundant in erythrocytes and renal tubules. AQP1 is also expressed by the choroid plexus and various other tissues. It forms a water-specific channel that provides the plasma membranes of red cells and kidney proximal tubules with high permeability to water, thereby permitting water to move in the direction of an osmotic gradient.

Application Notes

Optimal dilution of the Aquaporin 1 antibody should be determined by the researcher.

Immunogen

Amino acids DRVKVVWTSGQVEEYDL DADDINSRVEMKPK of human Aquaporin 1 were used as the immunogen for the Aquaporin 1 antibody.

Storage

After reconstitution, the Aquaporin 1 antibody can be stored for up to one month at 4oC. For long-term, aliquot and store at -20oC. Avoid repeated freezing and thawing.