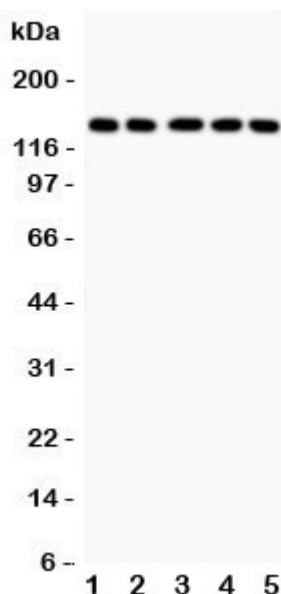


## Collagen 2 Antibody / COL2A1 (R31259)

| Catalog No. | Formulation   | Size   |
|-------------|---|--------|
| R31259      | 0.5mg/ml if reconstituted with 0.2ml sterile DI water | 100 ug |

[Bulk quote request](#)

|                           |  |
|---------------------------|--|
| <b>Availability</b>       | 1-3 business days  |
| <b>Species Reactivity</b> | Human, Mouse, Rat  |
| <b>Format</b>             | Antigen affinity purified  |
| <b>Clonality</b>          | Polyclonal (rabbit origin)   |
| <b>Isotype</b>            | Rabbit IgG   |
| <b>Purity</b>             | Antigen affinity   |
| <b>Buffer</b>             | Lyophilized from 1X PBS with 2.5% BSA and 0.025% sodium azide/thimerosal |
| <b>UniProt</b>            | P02458   |
| <b>Applications</b>       | Western blot : 0.5-1ug/ml  |
| <b>Limitations</b>        | This Collagen 2 antibody is available for research use only.             |



Western blot testing of Collagen 2 antibody and human samples 1: COLO320; 2: HeLa; 3: MCF-7; 4: A549; 5: Jurkat lysate. Predicted molecular weight ~140 kDa.

## Description

Collagen type 2 alpha 1, also known as COL2A1, is a human gene which is the major collagen synthesized by chondrocytes. COL2A1 is mapped to 12q13.11. This gene encodes the alpha-1 chain of type II collagen, a fibrillar collagen found in cartilage and the vitreous humor of the eye. Mutations in this gene are associated with achondrogenesis, chondrodysplasia, early onset familial osteoarthritis, SED congenita, Langer-Saldino achondrogenesis, Kniest dysplasia, Stickler syndrome type I, and spondyloepimetaphyseal dysplasia Strudwick type. In addition, defects in processing chondrocalcin, a calcium binding protein that is the C-propeptide of this collagen molecule, are also associated with chondrodysplasia.

## Application Notes

The stated application concentrations are suggested starting amounts. Titration of the Collagen 2 antibody may be required due to differences in protocols and secondary/substrate sensitivity.

## Immunogen

An amino acid sequence from the C-terminus of human COL2A1 (AFAGLGPREKGPDPPLQYMRA) was used as the immunogen for this Collagen 2 antibody.

## Storage

After reconstitution, the Collagen 2 antibody can be stored for up to one month at 4oC. For long-term, aliquot and store at -20oC. Avoid repeated freezing and thawing.