

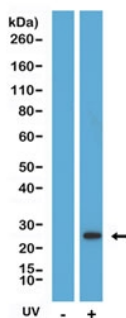
## Cleaved Caspase 8 Antibody [clone RM442] (R20457)

Catalog No.	Formulation	Size
R20457-0.1ML	Antibody in PBS with 50% glycerol, 1% BSA and 0.09% sodium azide	100 ul

Recombinant RABBIT MONOCLONAL

[Bulk quote request](#)

<b>Availability</b>	1-3 business days
<b>Species Reactivity</b>	Human
<b>Format</b>	Purified
<b>Clonality</b>	Recombinant Rabbit Monoclonal
<b>Isotype</b>	Rabbit IgG
<b>Clone Name</b>	RM442
<b>Purity</b>	Protein A purified from animal origin-free supernatant
<b>UniProt</b>	Q14790
<b>Applications</b>	Western blot : 1:1000-1:2000
<b>Limitations</b>	This recombinant Cleaved Caspase 8 antibody is available for research use only.



Western blot testing of lysate from human HeLa cells, with or without UV treatment, using Cleaved Caspase 8 antibody at 1:2000 dilution.

## Description

This antibody reacts specifically to the cleavage site on the pro domain created after being cleaved from the large subunit of Caspase 8.

## Application Notes

The stated application concentrations are suggested starting points. Titration of the recombinant Cleaved Caspase 8 antibody may be required due to differences in protocols and secondary/substrate sensitivity.

## Immunogen

A peptide encompassing the pro-domain-large subunit cleavage site of Caspase 8 was used as the immunogen for the Cleaved Caspase 8 antibody.

## Storage

Store the recombinant Cleaved Caspase 8 antibody at -20oC.