

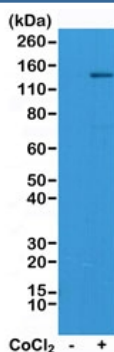
Recombinant HIF1A Antibody [clone RM242] (R20263)

Catalog No.	Formulation	Size
R20263-0.1ML	Antibody in PBS with 50% glycerol, 1% BSA and 0.09% sodium azide	100 ul

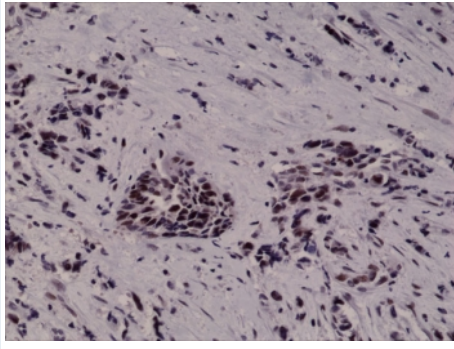
Recombinant RABBIT MONOCLONAL

[Bulk quote request](#)

Availability	1-3 business days
Species Reactivity	Human
Format	Purified
Clonality	Recombinant Rabbit Monoclonal
Isotype	Rabbit IgG
Clone Name	RM242
Purity	Protein A purified from animal origin-free supernatant
UniProt	Q16665
Gene ID	3091
Localization	Nuclear, possible cytoplasmic
Applications	Immunohistochemistry (FFPE) : 1:500-1:1000 (1) Western blot : 1:1000-1:2000
Limitations	This recombinant HIF1A antibody is available for research use only.



Western blot test of Jurkat cell lysate, untreated or treated with Cobalt Chloride (CoCl₂), using recombinant HIF1A antibody at 1:1000. Routinely observed molecular weight: 100~120 kDa.



IHC testing of FFPE human breast cancer tissue with recombinant HIF1A antibody at 1:1000.

Description

This recombinant HIF1A antibody reacts to human Hypoxia-inducible factor 1-alpha.

Immunogen

A peptide corresponding to Hypoxia-inducible factor 1-alpha was used as the immunogen for this recombinant HIF1A antibody.

Storage

Store the recombinant HIF1A antibody at -20oC (with glycerol) or aliquot and store at -20oC (without glycerol).