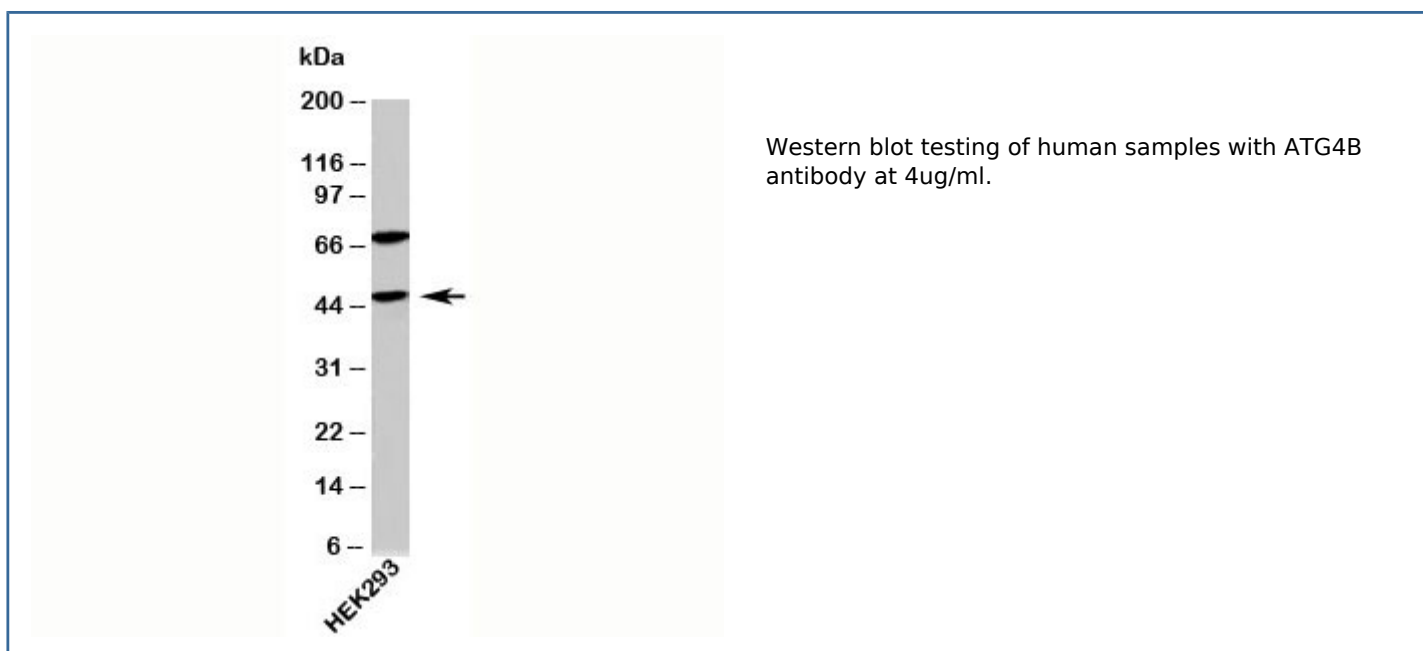


ATG4B Antibody (N1211)

| Catalog No. | Formulation | Size |
|-------------|---|--------|
| N1211-100UG | 0.5 mg/ml in 1X PBS with 0.1 mg/ml BSA (US sourced), 0.05% sodium azide | 100 ug |
| N1211-25UG | 0.5 mg/ml in 1X PBS with 0.1 mg/ml BSA (US sourced), 0.05% sodium azide | 25 ug |

[Bulk quote request](#)

| | |
|---------------------------|--|
| Species Reactivity | Human, Mouse, Rat |
| Format | Purified |
| Clonality | Polyclonal (rabbit origin) |
| Isotype | Rabbit IgG |
| Purity | Protein A affinity chromatography |
| Buffer | 1X PBS, pH 7.4 |
| Gene ID | 23192 |
| Applications | Western blot : 4-6ug/ml |
| Limitations | This ATG4B antibody is available for research use only. |



Description

Autophagy is the cellular mechanism of degradation and turnover of unnecessary or dysfunctional cellular components. The unneeded components are engulfed in vesicles called autophagosomes, where they are broken down and recycled. The 'autophagy-related gene' ATG4B is a regulator of autophagosome maturation. The microtubule-associated protein LC3-I is lipidated (called LC3-II in its lipidated state) and recruited to the autophagosomal membrane where it is of vital importance in the maturation of autophagosomes. ATG4B regulates LC3-II availability by modulating LC3-I lipidation.

Application Notes

Provided assay concentrations are suggestions only, ATG4B antibody titration may be required for optimal results.

Immunogen

A recombinant protein fragment from the N-terminal region of ATG4B was used as the immunogen for this antibody.

Storage

Aliquot the ATFG4B antibody and store frozen at -20oC or colder. Avoid repeated freeze-thaw cycles.

Alternate Names

Autophagy related protein 4 homolog B, APG4B