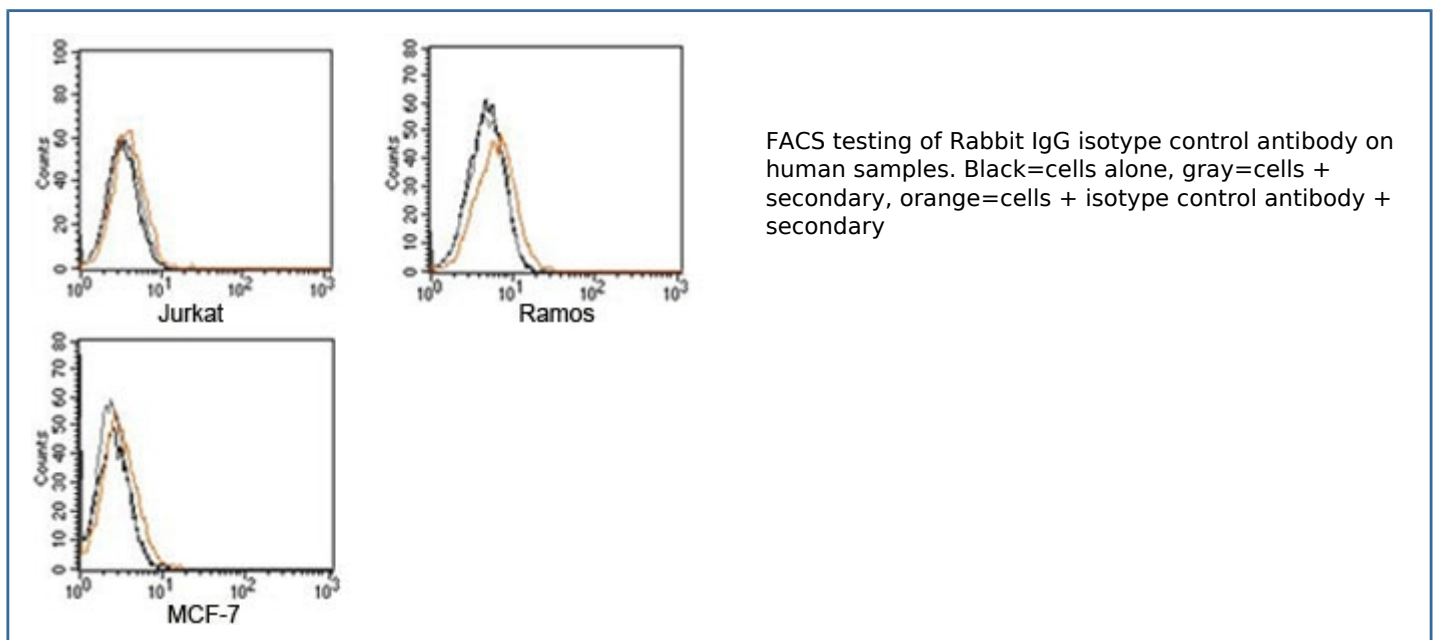


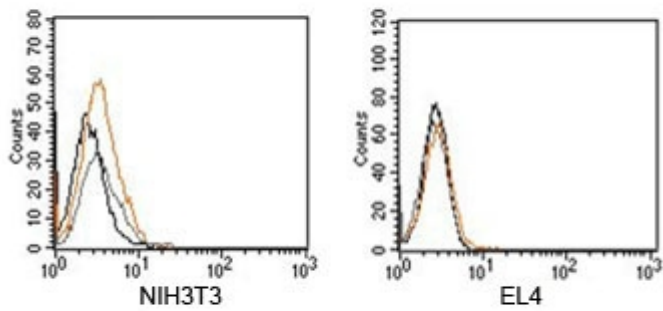
Rabbit Isotype Control Polyclonal Antibody (N1001)

Catalog No.	Formulation	Size
N1001-100UG	0.5 mg/ml antibody in PBS with 0.05% sodium azide	100 ug
N1001-25UG	0.5 mg/ml antibody in PBS with 0.05% sodium azide	25 ug

[Bulk quote request](#)

Species Reactivity	NA
Format	Purified
Clonality	Polyclonal (rabbit origin)
Isotype	Rabbit IgG
Purity	Protein A purified IgG fraction
Buffer	1X PBS, pH 7.4
Gene ID	NA
Applications	Flow Cytometry : assay dependent Immunohistochemistry : assay dependent Immunofluorescence : assay dependent
Limitations	This Rabbit isotype control antibody is available for research use only.





FACS testing of Rabbit IgG isotype control antibody on mouse samples. Black=cells alone, gray=cells + secondary, orange=cells + isotype control antibody + secondary

Description

Isotype control antibodies are negative controls used to measure non-specific binding or background levels of a primary antibody in different cell types. They are not specific to any target in a cell, yet retain all non-specific characteristics of the antibodies they control.

Application Notes

Generally to be used at the same concentration as the sample being controlled for.

Immunogen

This is purified naive rabbit sera and as such there was no immunogen.

Storage

Aliquot the rabbit antibody and store frozen at -20oC or colder to avoid repeated freeze-thaw cycles.

Alternate Names

Rabbit isotype control