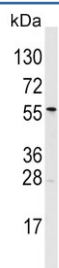


ALDH6A1 Antibody (F54378)

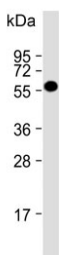
Catalog No.	Formulation	Size
F54378-0.4ML	In 1X PBS, pH 7.4, with 0.09% sodium azide	0.4 ml
F54378-0.08ML	In 1X PBS, pH 7.4, with 0.09% sodium azide	0.08 ml

[Bulk quote request](#)

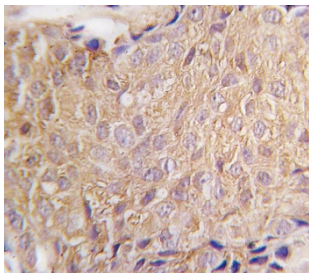
Availability	1-3 business days
Species Reactivity	Human
Format	Purified
Clonality	Polyclonal (rabbit origin)
Isotype	Rabbit Ig
Purity	Antigen affinity purified
UniProt	Q02252
Localization	Cytoplasmic
Applications	Immunohistochemistry (FFPE) : 1:25 Western Blot : 1:500-1:2000 Flow Cytometry : 1:25 (1x10 ⁶ cells)
Limitations	This ALDH6A1 antibody is available for research use only.



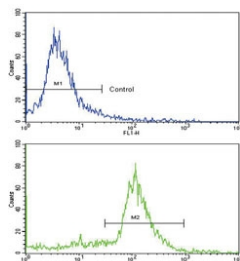
Western blot testing of human T-47D cell lysate with ALDH6A1 antibody. Predicted molecular weight: ~58 kDa.



Western blot testing of human liver lysate with ALDH6A1 antibody. Predicted molecular weight: ~58 kDa.



IHC testing of FFPE human breast carcinoma tissue with ALDH6A1 antibody. HIER: steam section in pH6 citrate buffer for 20 min and allow to cool prior to staining.



Flow cytometry testing of fixed and permeabilized mouse ATDC5 cells with ALDH6A1 antibody; Blue=isotype control, Green= ALDH6A1 antibody.

Description

ALDH6A1 belongs to the aldehyde dehydrogenases family of proteins. This enzyme plays a role in the valine and pyrimidine catabolic pathways. This protein is a mitochondrial methylmalonate semialdehyde dehydrogenase, and catalyzes the irreversible oxidative decarboxylation of malonate and methylmalonate semialdehydes to acetyl- and propionyl-CoA. Methylmalonate semialdehyde dehydrogenase deficiency is characterized by elevated beta-alanine, 3-hydroxypropionic acid, and both isomers of 3-amino and 3-hydroxyisobutyric acids in urine organic acids.

Application Notes

The stated application concentrations are suggested starting points. Titration of the ALDH6A1 antibody may be required due to differences in protocols and secondary/substrate sensitivity.

Immunogen

A portion of amino acids 30-59 from the human protein was used as the immunogen for the ALDH6A1 antibody.

Storage

Aliquot the ALDH6A1 antibody and store frozen at -20oC or colder. Avoid repeated freeze-thaw cycles.