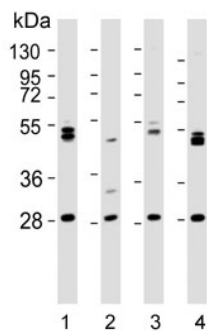


ARV1 Antibody (F54227)

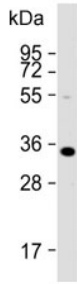
Catalog No.	Formulation	Size
F54227-0.4ML	In 1X PBS, pH 7.4, with 0.09% sodium azide	0.4 ml
F54227-0.08ML	In 1X PBS, pH 7.4, with 0.09% sodium azide	0.08 ml

[Bulk quote request](#)

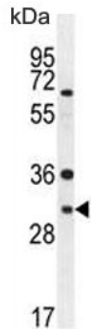
Availability	1-3 business days
Species Reactivity	Human
Format	Purified
Clonality	Polyclonal (rabbit origin)
Isotype	Rabbit Ig
Purity	Antigen affinity purified
UniProt	Q9H2C2
Gene ID	64801
Localization	Cytoplasmic (ER)
Applications	Western blot : 1:1000-1:2000 Immunohistochemistry (FFPE) : 1:50-1:100 Flow cytometry : 1:25 (1x10e6 cells)
Limitations	This ARV1 antibody is available for research use only.



Western blot testing of human 1) 293T, 2) kidney, 3) HL60 and 4) K562 lysate with ARV1 antibody. Predicted molecular weight ~31 kDa.



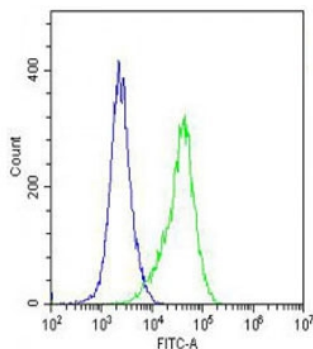
Western blot testing of human HeLa lysate with ARV1 antibody. Predicted molecular weight ~31 kDa.



Western blot testing of human A2058 lysate with ARV1 antibody. Predicted molecular weight ~31 kDa.



IHC staining of FFPE human skeletal muscle with ARV1 antibody. HIER: boil tissue sections in pH6, 10mM citrate buffer, for 20 min and allow to cool before testing.



Flow cytometry testing of fixed and permeabilized human A2058 cells with ARV1 antibody; Blue=isotype control, Green= ARV1 antibody.

Description

May act as a mediator of sterol homeostasis (Potential).

Application Notes

The stated application concentrations are suggested starting points. Titration of the ARV1 antibody may be required due to differences in protocols and secondary/substrate sensitivity.

Immunogen

A portion of amino acids 23-51 from the human protein were used as the immunogen for the ARV1 antibody .

Storage

Aliquot the ARV1 antibody and store frozen at -20oC or colder. Avoid repeated freeze-thaw cycles.