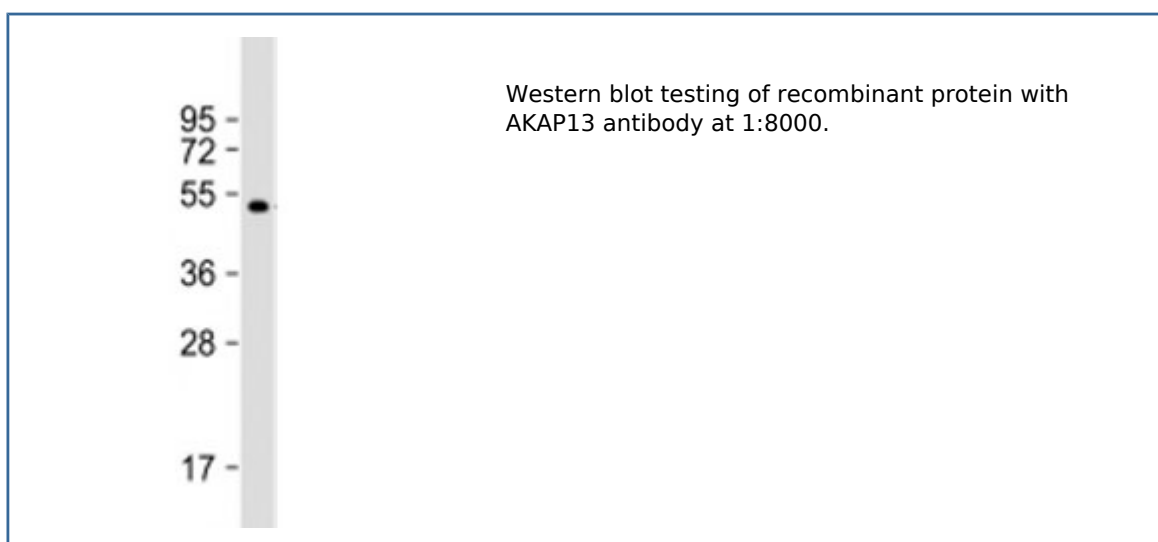


## AKAP13 Antibody [clone 1742CT411.87.24] (F53944)

Catalog No.	Formulation	Size
F53944-0.2ML	In 1X PBS, pH 7.4, with 0.09% sodium azide	0.2 ml
F53944-0.05ML	In 1X PBS, pH 7.4, with 0.09% sodium azide	0.05 ml

[Bulk quote request](#)

<b>Availability</b>	1-3 business days
<b>Species Reactivity</b>	Human
<b>Format</b>	Purified
<b>Clonality</b>	Monoclonal (mouse origin)
<b>Isotype</b>	Mouse IgG1, kappa
<b>Clone Name</b>	1742CT411.87.24
<b>Purity</b>	Protein G affinity chromatography
<b>UniProt</b>	Q12802
<b>Applications</b>	Western blot : 1:4000-8000
<b>Limitations</b>	This AKAP13 antibody is available for research use only.



## Description

A-kinase anchor protein 13 anchors cAMP-dependent protein kinase (PKA) and acts as an adapter protein to selectively couple G alpha-13 and Rho. Augments gene activation by the estrogen receptor in an element- specific and ligand-dependent manner. Activates estrogen receptor beta by a p38 MAPK-dependent pathway. Stimulates exchange activity on Rho proteins in vitro, but not on CDC42, Ras or Rac and may bind calcium ions.

## Application Notes

Titration of the AKAP13 antibody may be required due to differences in protocols and secondary/substrate sensitivity.

## Immunogen

A partial recombinant protein corresponding to amino acids 18-170 from the human protein was used as the immunogen for the AKAP13 antibody.

## Storage

Aliquot the AKAP13 antibody and store frozen at -20oC or colder. Avoid repeated freeze-thaw cycles.