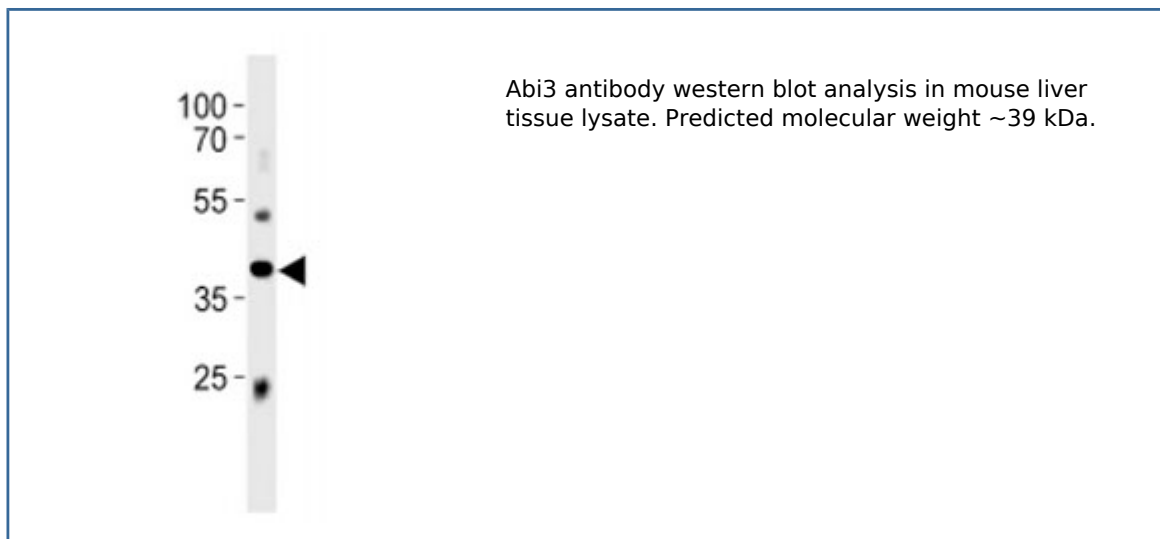


## Abi3 Antibody (F52350)

| Catalog No.   | Formulation                                | Size    |
|---------------|--|---------|
| F52350-0.4ML  | In 1X PBS, pH 7.4, with 0.09% sodium azide | 0.4 ml  |
| F52350-0.08ML | In 1X PBS, pH 7.4, with 0.09% sodium azide | 0.08 ml |

[Bulk quote request](#)

|                           |  |
|---------------------------|--|
| <b>Availability</b>       | 1-3 business days                                      |
| <b>Species Reactivity</b> | Mouse  |
| <b>Format</b>             | Antigen affinity purified                              |
| <b>Clonality</b>          | Polyclonal (rabbit origin)                             |
| <b>Isotype</b>            | Rabbit Ig  |
| <b>Purity</b>             | Antigen affinity                                       |
| <b>UniProt</b>            | Q8BYZ1   |
| <b>Applications</b>       | Western blot : 1:1000                                  |
| <b>Limitations</b>        | This Abi3 antibody is available for research use only. |



## Description

ABI gene family member 3 inhibits ectopic tumor cell metastasis of SRD cells. In vitro, reduces cell motility.

## Application Notes

Titration of the Abi3 antibody may be required due to differences in protocols and secondary/substrate sensitivity.

## Immunogen

This mouse Abi3 antibody was produced from rabbits immunized with a KLH conjugated synthetic peptide between 300-329 amino acids from the C-terminal region of mouse Abi3.

## Storage

Aliquot the Abi3 antibody and store frozen at -20oC or colder. Avoid repeated freeze-thaw cycles.