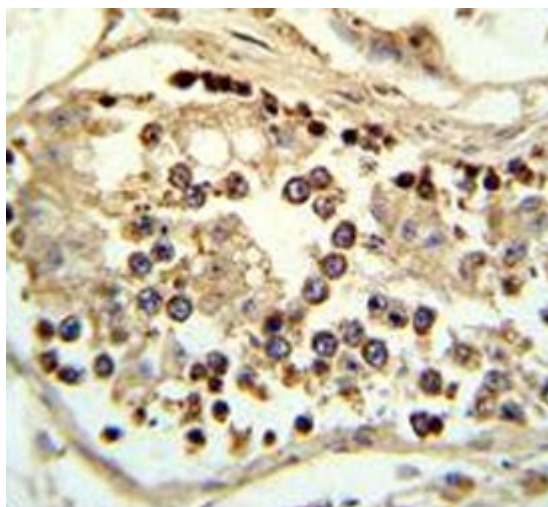


## ABHD12 Antibody (F51417)

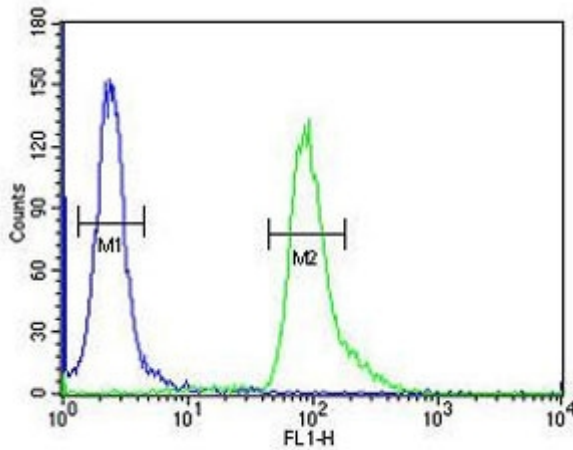
Catalog No.	Formulation	Size
F51417-0.4ML	In 1X PBS, pH 7.4, with 0.09% sodium azide	0.4 ml
F51417-0.08ML	In 1X PBS, pH 7.4, with 0.09% sodium azide	0.08 ml

[Bulk quote request](#)

<b>Availability</b>	1-3 business days
<b>Species Reactivity</b>	Human
<b>Predicted Reactivity</b>	Mouse, Rat, Bovine, Primate
<b>Format</b>	Antigen affinity purified
<b>Clonality</b>	Polyclonal (rabbit origin)
<b>Isotype</b>	Rabbit Ig
<b>Purity</b>	Antigen affinity
<b>UniProt</b>	Q8N2K0
<b>Localization</b>	Cytoplasmic, membranous
<b>Applications</b>	Western blot : 1:1000 IHC (Paraffin) : 1:50-1:100 Flow Cytometry : 1:10-1:50
<b>Limitations</b>	This ABHD12 antibody is available for research use only.



IHC analysis of FFPE human testis tissue  
ABHD12 antibody

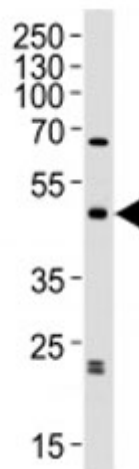


negative control (left

ABHD12  
A549 c  
control  
goat-anti-rabbit  
analysis

histogram). FITC-conjugated goat-anti-rabbit secondary Ab was used for the analysis."

title="ABHD12 antibody flow cytometric analysis of human A549 cells (right histogram) compared to a [negative control](#) (left histogram). FITC-conjugated goat-anti-rabbit secondary Ab was used for the analysis.">



Western blot analysis of lysate from human b... tissue lysate using ABHD12 antibody diluted... Predicted molecular weight ~45 kDa.

## Description

Abhydrolase domain-containing protein 12 has 2-arachidonoylglycerol hydrolase activity (By similarity). It may be a regulator of endocannabinoid signaling pathways (By similarity).

## Application Notes

Titration of the ABHD12 antibody may be required due to differences in protocols and secondary/substrate sensitivity.

## Immunogen

A portion of amino acids 40-66 from the human protein was used as the immunogen for this ABHD12 antibody.

## Storage

Aliquot the ABHD12 antibody and store frozen at -20°C or colder. Avoid repeated freeze-thaw cycles.