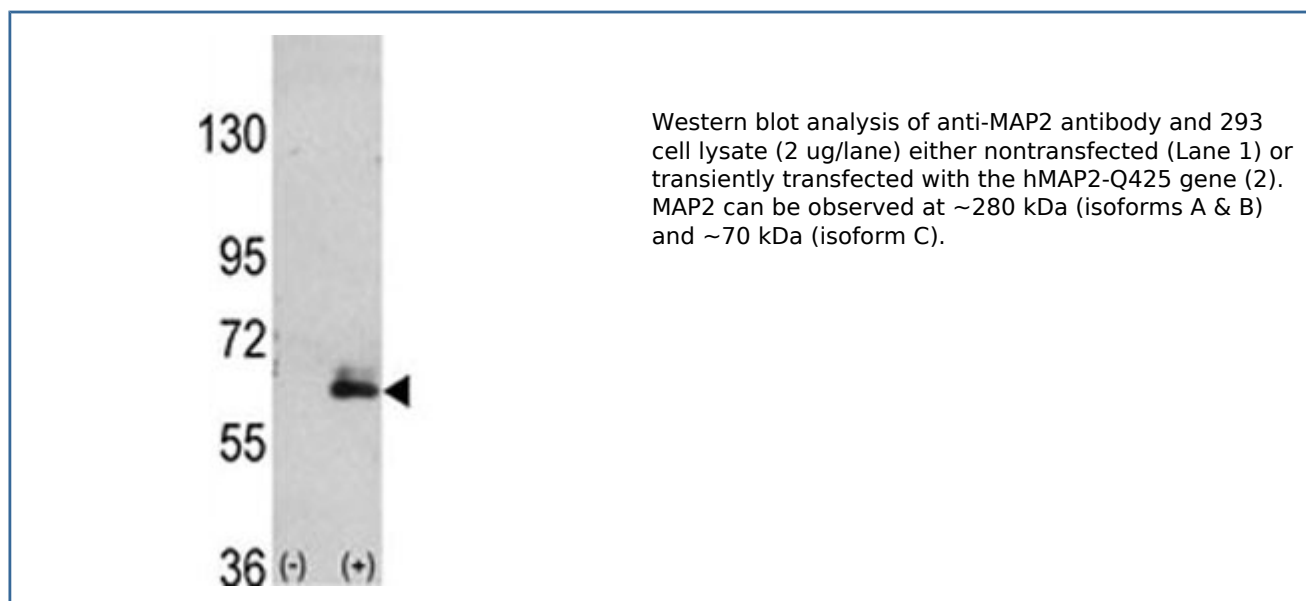


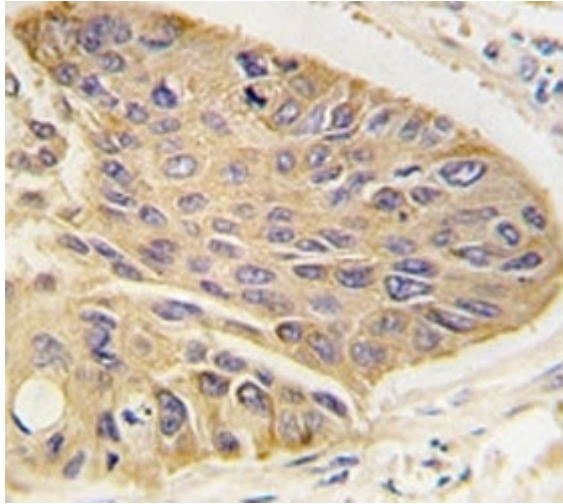
## Anti-MAP2 Antibody (F47823)

Catalog No.	Formulation	Size
F47823-0.4ML	In 1X PBS, pH 7.4, with 0.09% sodium azide	0.4 ml
F47823-0.08ML	In 1X PBS, pH 7.4, with 0.09% sodium azide	0.08 ml

[Bulk quote request](#)

<b>Availability</b>	1-3 business days
<b>Species Reactivity</b>	Human
<b>Format</b>	Antigen affinity purified
<b>Clonality</b>	Polyclonal (rabbit origin)
<b>Isotype</b>	Rabbit Ig
<b>Purity</b>	Antigen affinity
<b>UniProt</b>	P11137
<b>Applications</b>	Western blot : 1:1000 IHC (Paraffin) : 1:50-1:100
<b>Limitations</b>	This anti-MAP2 antibody is available for research use only.





IHC analysis of FFPE human lung carcinoma tissue stained with anti-MAP2 antibody

## Description

MAP2 belongs to the microtubule-associated protein family. It is a major microtubule protein of the brain.

## Application Notes

Titration of the anti-MAP2 antibody may be required due to differences in protocols and secondary/substrate sensitivity.

## Immunogen

A portion of amino acids 1766-1796 from the human protein was used as the immunogen for this anti-MAP2 antibody.

## Storage

Can be stored at 4°C for up to one month. For long-term, aliquot the anti-MAP2 antibody and store frozen at -20°C or colder. Avoid repeated freeze-thaw cycles.