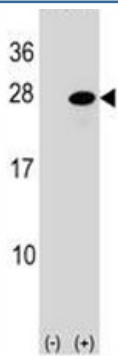


## ATF3 Antibody (F44888)

Catalog No.	Formulation	Size
F44888-0.4ML	In 1X PBS, pH 7.4, with 0.09% sodium azide	0.4 ml
F44888-0.08ML	In 1X PBS, pH 7.4, with 0.09% sodium azide	0.08 ml

### Bulk quote request

<b>Availability</b>	1-3 business days
<b>Species Reactivity</b>	Human
<b>Predicted Reactivity</b>	Mouse, Rat, Bovine
<b>Format</b>	Antigen affinity purified
<b>Clonality</b>	Polyclonal (rabbit origin)
<b>Isotype</b>	Rabbit Ig
<b>Purity</b>	Antigen affinity
<b>UniProt</b>	P18847
<b>Applications</b>	Western blot : 1:1000 Flow Cytometry : 1:10-1:50
<b>Limitations</b>	This ATF3 antibody is available for research use only.

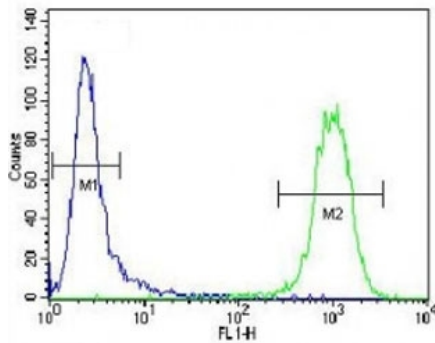


Western blot analysis of ATF3 antibody and 293 cell lysate (2 ug/lane) either nontransfected (Lane 1) or transiently transfected (2) with the ATF3 gene.

ATF3 antibody western blot analysis in CEM lysate. Predicted size: 21-28 kDa



ATF3 antibody flow cytometric analysis of CEM cells (right histogram) compared to a negative control (left histogram). FITC-conjugated goat-anti-rabbit secondary Ab was used for the analysis.



## Description

Activating transcription factor 3 is a member of the mammalian activation transcription factor/cAMP responsive element-binding (CREB) protein family of transcription factors. Multiple transcript variants encoding two different isoforms have been found for this gene. The longer isoform represses rather than activates transcription from promoters with ATF binding elements. The shorter isoform (deltaZip2) lacks the leucine zipper protein-dimerization motif and does not bind to DNA, and it stimulates transcription presumably by sequestering inhibitory co-factors away from the promoter. It is possible that alternative splicing of the ATF3 gene may be physiologically important in the regulation of target genes.

## Application Notes

Titration of the ATF3 antibody may be required due to differences in protocols and secondary/substrate sensitivity.

## Immunogen

A portion of amino acids 140-168 from the human protein was used as the immunogen for this ATF3 antibody.

## Storage

Aliquot the ATF3 antibody and store frozen at -20°C or colder. Avoid repeated freeze-thaw cycles.

