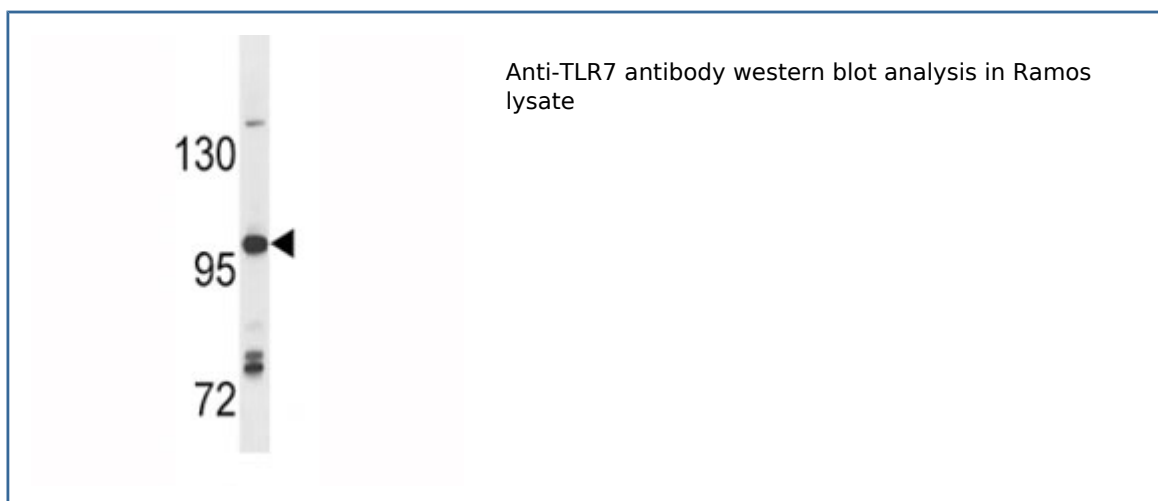


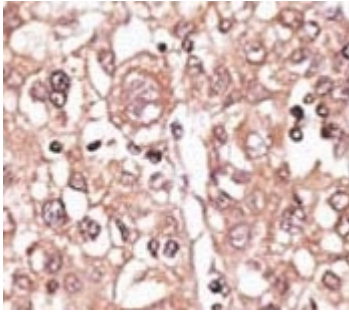
Anti-TLR7 Antibody (F44379)

Catalog No.	Formulation	Size
F44379-0.4ML	In 1X PBS, pH 7.4, with 0.09% sodium azide	0.4 ml
F44379-0.08ML	In 1X PBS, pH 7.4, with 0.09% sodium azide	0.08 ml

[Bulk quote request](#)

Availability	1-3 business days
Species Reactivity	Human, Mouse
Format	Purified
Clonality	Polyclonal (rabbit origin)
Isotype	Rabbit Ig
Purity	Purified
UniProt	Q9NYK1
Applications	Western blot : 1:1000 IHC (Paraffin) : 1:50-1:100
Limitations	This anti-TLR7 antibody is available for research use only.





IHC analysis of FFPE human hepatocarcinoma tissue stained with the anti-TLR7 antibody

Description

Toll like receptor 7 is a key component of innate and adaptive immunity. TLRs (Toll-like receptors) control host immune response against pathogens through recognition of molecular patterns specific to microorganisms. TLR7 is a nucleotide-sensing TLR which is activated by single-stranded RNA. Acts via MYD88 and TRAF6, leading to NF-kappa-B activation, cytokine secretion and the inflammatory response (By similarity). [UniProt]

Application Notes

Titration of the anti-TLR7 antibody may be required due to differences in protocols and secondary/substrate sensitivity.

Immunogen

A portion of amino acids 98-128 from the human protein was used as the immunogen for this anti-TLR7 antibody.

Storage

Aliquot the anti-TLR7 antibody and store frozen at -20oC or colder. Avoid repeated freeze-thaw cycles.