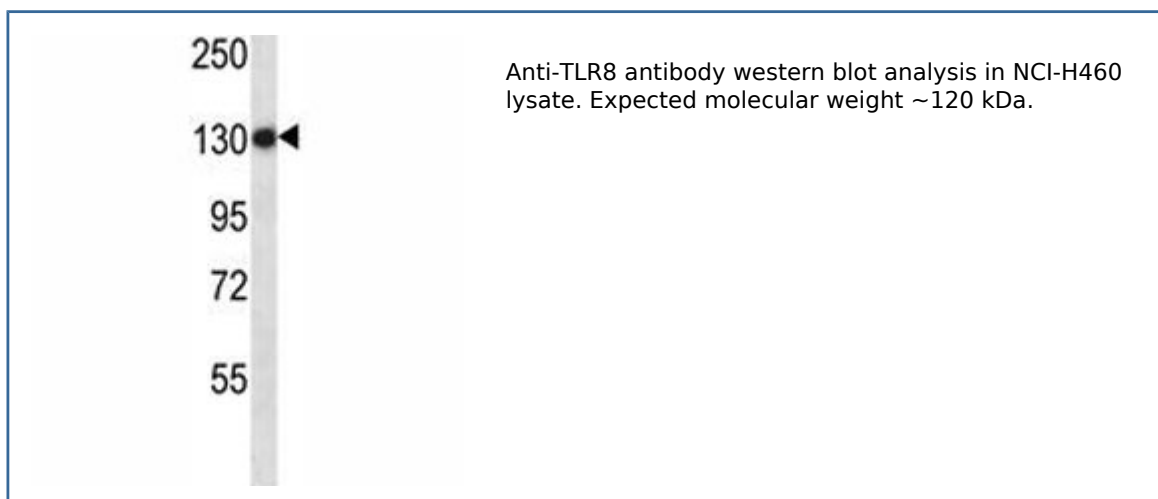


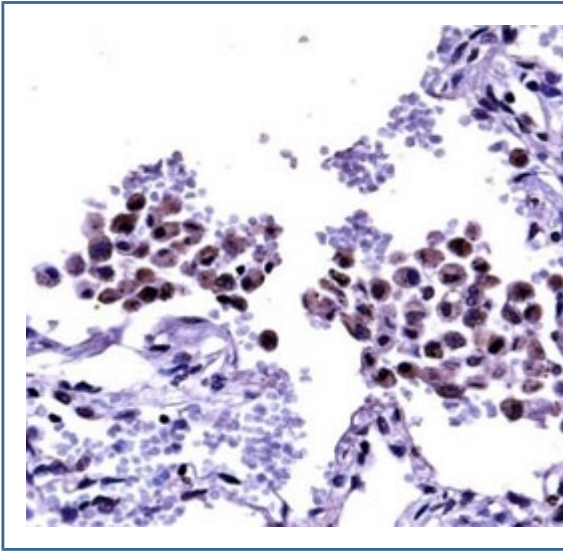
Anti-TLR8 Antibody (F43434)

Catalog No.	Formulation	Size
F43434-0.4ML	In 1X PBS, pH 7.4, with 0.09% sodium azide	0.4 ml
F43434-0.08ML	In 1X PBS, pH 7.4, with 0.09% sodium azide	0.08 ml

[Bulk quote request](#)

Availability	1-3 business days
Species Reactivity	Human
Format	Antigen affinity purified
Clonality	Polyclonal (rabbit origin)
Isotype	Rabbit Ig
Purity	Antigen affinity
UniProt	Q9NR97
Localization	Cytoplasmic
Applications	Western blot : 1:1000 IHC (Paraffin) : 1:10-1:50
Limitations	This anti-TLR8 antibody is available for research use only.





Anti-TLR8 antibody immunohistochemistry analysis in formalin fixed and paraffin embedded human lung tissue

Description

The protein encoded by this gene is a member of the Toll-like receptor (TLR) family which plays a fundamental role in pathogen recognition and activation of innate immunity. TLRs are highly conserved from *Drosophila* to humans and share structural and functional similarities. They recognize pathogen-associated molecular patterns (PAMPs) that are expressed on infectious agents, and mediate the production of cytokines necessary for the development of effective immunity. The various TLRs exhibit different patterns of expression. This gene is predominantly expressed in lung and peripheral blood leukocytes, and lies in close proximity to another family member, TLR7, on chromosome X.

Application Notes

Titration of the anti-TLR8 antibody may be required due to differences in protocols and secondary/substrate sensitivity.

Immunogen

A portion of amino acids 434-463 from the human protein was used as the immunogen for this anti-TLR8 antibody.

Storage

Aliquot the anti-TLR8 antibody and store frozen at -20°C or colder. Avoid repeated freeze-thaw cycles.