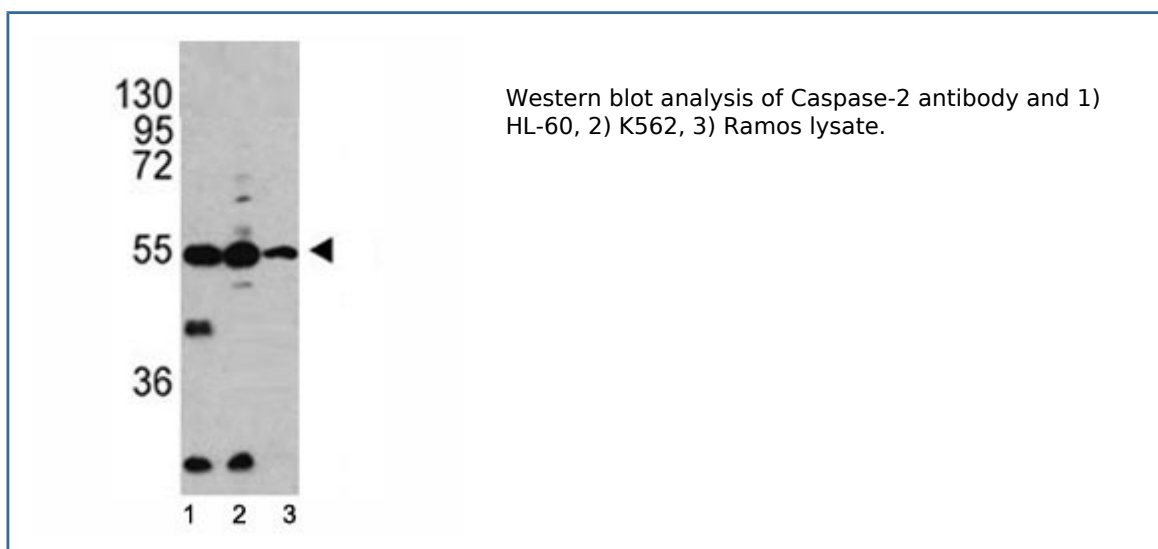


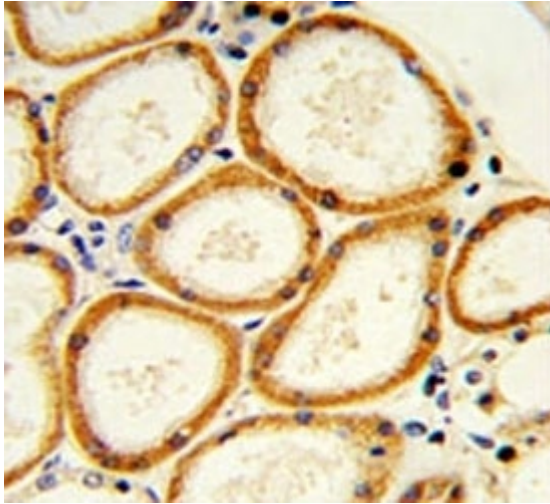
Caspase-2 Antibody (F42862)

| Catalog No. | Formulation | Size |
|---------------|--|---------|
| F42862-0.4ML | In 1X PBS, pH 7.4, with 0.09% sodium azide | 0.4 ml |
| F42862-0.08ML | In 1X PBS, pH 7.4, with 0.09% sodium azide | 0.08 ml |

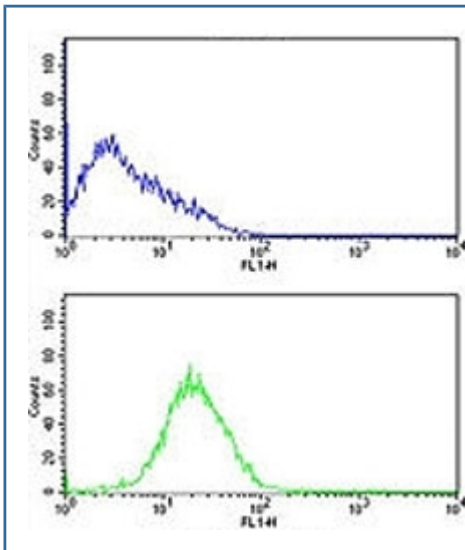
[Bulk quote request](#)

| | |
|---------------------------|---|
| Availability | 1-3 business days |
| Species Reactivity | Human |
| Format | Purified |
| Clonality | Polyclonal (rabbit origin) |
| Isotype | Rabbit Ig |
| Purity | Purified |
| UniProt | P42575 |
| Applications | Western blot : 1:1000 IHC (Paraffin) : 1:10-1:50 Flow Cytometry : 1:10-1:50 |
| Limitations | This Caspase-2 antibody is available for research use only. |





IHC analysis of FFPE human lung with Caspase-2 antibody



Caspase-2 antibody flow cytometric analysis of HL-60 cells (bottom histogram) compared to a negative control cell (top histogram). FITC-conjugated goat-anti-rabbit secondary Ab was used for the analysis.

Description

CASP2 is a protein which is a member of the cysteine-aspartic acid protease (caspase) family. Sequential activation of caspases plays a central role in the execution-phase of cell apoptosis. The protein exist as inactive proenzymes which undergo proteolytic processing at conserved aspartic residues to produce two subunits, large and small, that dimerize to form the active enzyme. The proteolytic cleavage of this protein is induced by a variety of apoptotic stimuli.

Application Notes

Titration of the Caspase-2 antibody may be required due to differences in protocols and secondary/substrate sensitivity.

Immunogen

A portion of amino acids 198-226 from the human protein was used as the immunogen for this Caspase-2 antibody.

Storage

Aliquot the Caspase-2 antibody and store frozen at -20oC or colder. Avoid repeated freeze-thaw cycles.