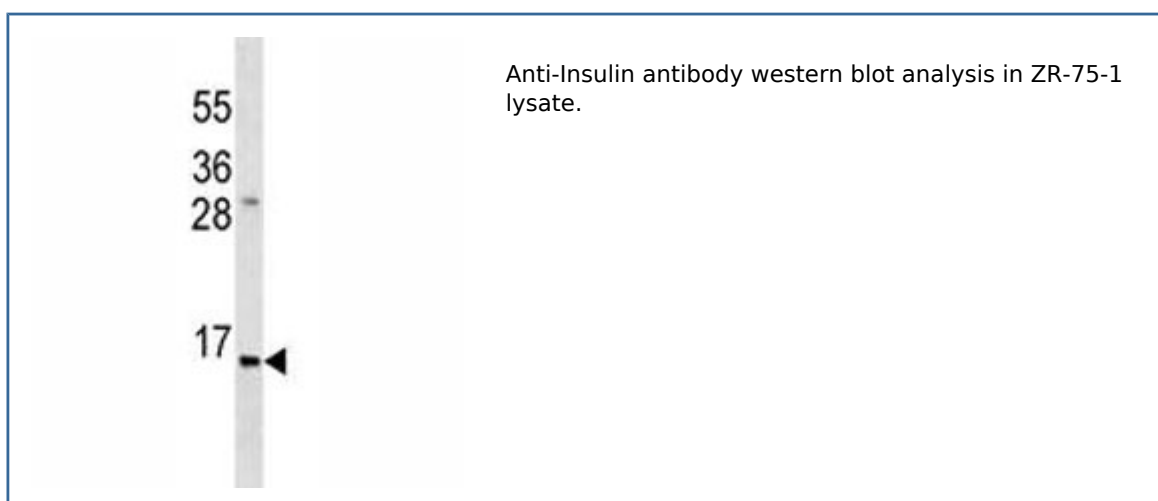


Anti-Insulin Antibody [clone 396CT20.4.4] (F40326)

Catalog No.	Formulation	Size
F40326-0.4ML	In 1X PBS, pH 7.4, with 0.09% sodium azide	0.4 ml
F40326-0.08ML	In 1X PBS, pH 7.4, with 0.09% sodium azide	0.08 ml

[Bulk quote request](#)

Availability	1-3 business days
Species Reactivity	Human
Format	Purified
Clonality	Monoclonal (mouse origin)
Isotype	Mouse IgM
Clone Name	396CT20.4.4
Purity	Purified
UniProt	P01308
Applications	Western blot : 1:100-1:500
Limitations	This anti-Insulin antibody is available for research use only.



Description

Insulin decreases blood glucose concentration. It increases cell permeability to monosaccharides, amino acids and fatty acids. It accelerates glycolysis, the pentose phosphate cycle, and glycogen synthesis in liver. [UniProt]

Application Notes

Titration of the anti-Insulin antibody may be required due to differences in protocols and secondary/substrate sensitivity.

Immunogen

A portion of amino acids 35-64 from the human protein was used as the immunogen for this anti-Insulin antibody.

Storage

Aliquot the anti-Insulin antibody and store frozen at -20oC or colder. Avoid repeated freeze-thaw cycles.