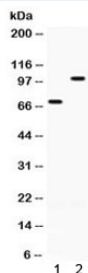


ZP1 Antibody (R32398)

Catalog No.	Formulation	Size
R32398	0.5mg/ml if reconstituted with 0.2ml sterile DI water	100 ug

[Bulk quote request](#)

Availability	1-3 business days
Species Reactivity	Human, Rat
Format	Antigen affinity purified
Host	Rabbit
Clonality	Polyclonal (rabbit origin)
Isotype	Rabbit IgG
Purity	Antigen affinity
Buffer	Lyophilized from 1X PBS with 2.5% BSA and 0.025% sodium azide
UniProt	P60852
Applications	Western Blot : 0.1-0.5ug/ml
Limitations	This ZP1 antibody is available for research use only.



Western blot testing of 1) rat ovary and 2) human SKOV lysate with ZP1 antibody.
Expected molecular weight: 70/90-110 kDa (unmodified/glycosylated).

Description

Zona pellucida sperm-binding protein 1 is a protein that belongs to the mammalian zona pellucida. The zona pellucida is an extracellular matrix that surrounds the oocyte and early embryo. It is composed primarily of three or four glycoproteins with various functions during fertilization and preimplantation development. Zp1 ensures the structural integrity of the zona pellucida. Mutations in this gene are a cause of oocyte maturation defect and infertility. And this gene is mapped to chromosome 11q12.2.

Application Notes

Optimal dilution of the ZP1 antibody should be determined by the researcher.

Immunogen

Amino acids HVLEKDGRFHLRVFMEAVLPNGRVDVAQDATLICPKPD were used as the immunogen for the ZP1 antibody.

Storage

After reconstitution, the ZP1 antibody can be stored for up to one month at 4oC. For long-term, aliquot and store at -20oC. Avoid repeated freezing and thawing.

References (1)