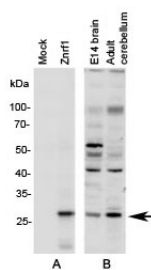


Znrf1 Antibody (R35861)

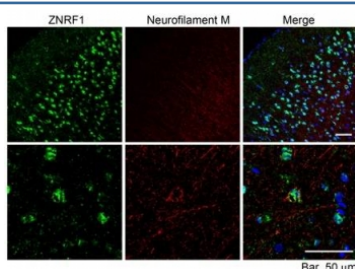
Catalog No.	Formulation	Size
R35861-100UG	0.5 mg/ml in 1X TBS, pH7.3, with 0.5% BSA (US sourced) and 0.02% sodium azide	100 ug

[Bulk quote request](#)

Availability	1-3 business days
Species Reactivity	Human, Mouse, Rat
Predicted Reactivity	Cow, Dog, Pig
Format	Antigen affinity purified
Clonality	Polyclonal (goat origin)
Isotype	Goat Ig
Purity	Antigen affinity
Gene ID	84937
Applications	Western Blot : 1-3ug/ml Immunohistochemistry (FFPE) : 10ug/ml ELISA (peptide) LOD : 1:32000
Limitations	This Znrf1 antibody is available for research use only.



Western blot A: N2a cell lysate overexpressing mouse Znrf1 and Blot B: mouse brain lysates (embryo E14 and adult cerebellum) tested with Znrf1 antibody at 1ug/ml.



IHC staining of FFPE mouse cerebral cortex with Znrf1 antibody at 10ug/ml. HIER: microwaved with pH6 citrate buffer, streptavidin-Alexa Fluor 488-staining after biotinylated secondary.

Description

Additional name(s) for this target protein: Zinc and ring finger 1

Application Notes

Optimal dilution of the Znrf1 antibody should be determined by the researcher.

1. This Znrf1 antibody will detect isoforms a and b.

Immunogen

Amino acids SDSTYAHGNGYQET were used as the immunogen for this Znrf1 antibody.

Storage

Aliquot and store the Znrf1 antibody at -20oC.