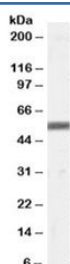


## ZMPSTE24 Antibody (R33968)

Catalog No.	Formulation	Size
R33968-100UG	0.5 mg/ml in 1X TBS, pH7.3, with 0.5% BSA (US sourced) and 0.02% sodium azide	100 ug

[Bulk quote request](#)

Availability	1-3 business days
Species Reactivity	Human
Format	Antigen affinity purified
Clonality	Polyclonal (goat origin)
Isotype	Goat Ig
Purity	Antigen affinity
Gene ID	10269
Applications	Western Blot : 0.5-1.5ug/ml ELISA (peptide) LOD : 1:128000
Limitations	This ZMPSTE24 antibody is available for research use only.



Western blot testing of human skin lysate with ZMPSTE24 antibody at 0.5ug/ml.  
Predicted molecular weight: ~55kDa.

### Description

Additional name(s) for this target protein: Zinc metalloproteinase (STE24 homolog, yeast); FACE1

### Application Notes

Optimal dilution of the ZMPSTE24 antibody should be determined by the researcher.

### Immunogen

Amino acids ERLQALKTMKQH were used as the immunogen for this ZMPSTE24 antibody.

## Storage

Aliquot and store the ZMPSTE24 antibody at -20oC.