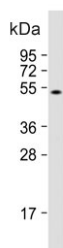


ZIC3 Antibody (F54773)

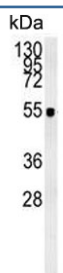
Catalog No.	Formulation	Size
F54773-0.4ML	In 1X PBS, pH 7.4, with 0.09% sodium azide	0.4 ml
F54773-0.08ML	In 1X PBS, pH 7.4, with 0.09% sodium azide	0.08 ml

[Bulk quote request](#)

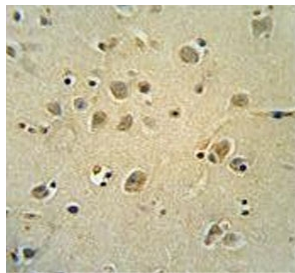
Availability	1-3 business days
Species Reactivity	Human
Format	Purified
Clonality	Polyclonal (rabbit origin)
Isotype	Rabbit Ig
Purity	Purified
UniProt	O60481
Localization	Cytoplasmic, nuclear
Applications	Flow Cytometry : 1:50-1:100 (1x10e6 cells) Immunohistochemistry (FFPE) : 1:50-1:100 Western Blot : 1:500-1:1000
Limitations	This ZIC3 antibody is available for research use only.



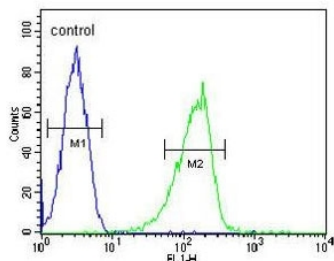
Western blot testing of human HL60 cell lysate with ZIC3 antibody. Predicted molecular weight ~51 kDa.



Western blot testing of human CCRF-CEM cell lysate with ZIC3 antibody. Predicted molecular weight ~51 kDa.



IHC testing of FFPE human brain tissue with ZIC3 antibody. HIER: steam section in pH6 citrate buffer for 20 min and allow to cool prior to staining.



Flow cytometry testing of human CCRF-CEM cells with ZIC3 antibody; Blue=isotype control, Green= ZIC3 antibody.

Description

This gene encodes a member of the ZIC family of C2H2-type zinc finger proteins. This nuclear protein probably functions as a transcription factor in early stages of left-right body axis formation. Mutations in this gene cause X-linked visceral heterotaxy, which includes congenital heart disease and left-right axis defects in organs.

Application Notes

The stated application concentrations are suggested starting points. Titration of the ZIC3 antibody may be required due to differences in protocols and secondary/substrate sensitivity.

Immunogen

A portion of amino acids 239-267 from the human protein was used as the immunogen for the ZIC3 antibody.

Storage

Aliquot the ZIC3 antibody and store frozen at -20oC or colder. Avoid repeated freeze-thaw cycles.